

## MINICUT

Bohrungsbearbeitung

grooving, boring and profiling

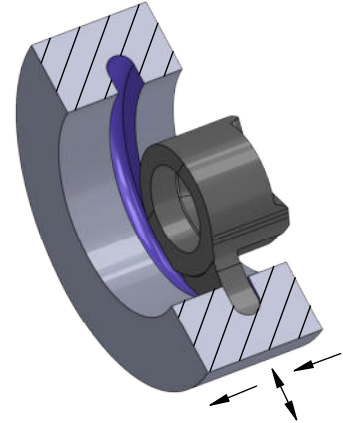
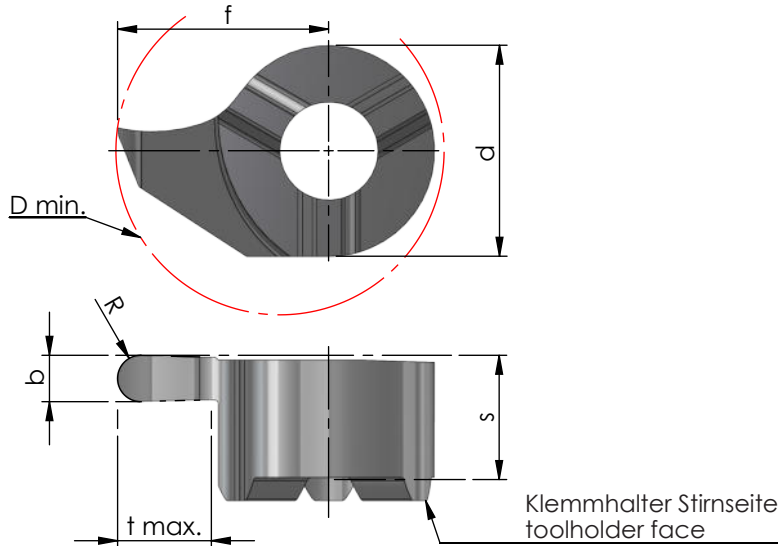
## Typ Stechdrehen

Stechdrehen und Kopieren  
Vollradius

type grooving,  
grooving and profiling  
full radius

D min. 8 - 16 mm  
Vollradius R 0.4 - 2.0

D min. 8 - 16 mm  
full radius R 0.4 - 2.0



Rechts (R): wie gezeichnet  
Links (L): spiegelbildlich

righthand (R): as shown  
lefthand version (L): mirror image

Abmessungen in mm

dimensions in mm

Bestellnummer part number	b +0.05	b (inch)	R	f	s	d	t max.	D min.				Klemmhalter Typ toolholder type
									K10F	AL41F	P18C	
R/L S08.008R04	0.80		0.40	4.8	3.3	6.0	1.0	8	●	●		608
R/L S08.012R06	1.20		0.60	4.8	3.3	6.0	1.0	8		●		
R/L S08.U15R08	1.57	0.062"	0.78	4.8	3.3	6.0	1.0	8	●	●		
R/L S08.018R09	1.80		0.90	4.8	3.3	6.0	1.0	8		●		
R/L S08.020R10	2.00		1.00	4.8	3.3	6.0	1.0	8		●		
R/L S09.008R04	0.80		0.40	5.5	3.5	6.2	1.6	9		●		609
R/L S09.010R05	1.00		0.50	5.5	3.5	6.2	1.6	9		●		
R/L S09.012R06	1.20		0.60	5.5	3.5	6.2	1.6	9		●		
R/L S09.018R09	1.80		0.90	5.5	3.5	6.2	1.6	9		●		
R/L S09.020R10	2.00		1.00	5.5	3.5	6.2	1.6	9		●		
↳ ...												

Weitere HM Sorten können Sie in der Sortenübersicht im Kapitel "Technische Hinweise" und der Preisliste finden.

Bestellbeispiel:  
für rechte Ausführung und Sorte  
RS08.008R04/AL41F

More carbide grades you can find in the grades summary in the chapter "technical instructions" and in the price list.

order-example:  
righthand version and grade  
RS08.008R04/AL41F