

NUTSTOSSEN

von Längsnuten nach
DIN 138 und DIN 6885

broaching keyways according
DIN 138 und DIN 6885

Typ NPU

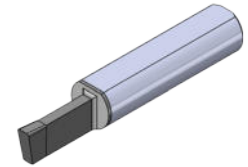
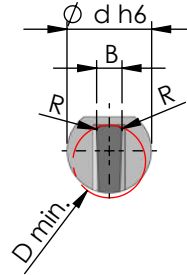
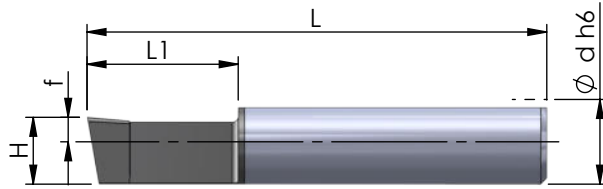
Schneideinsatz

D min. 6 - 7 mm
Toleranzklasse P9 / JS9

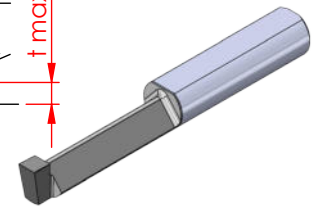
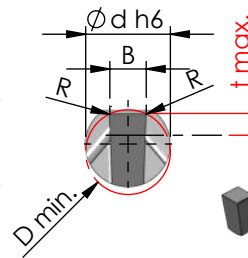
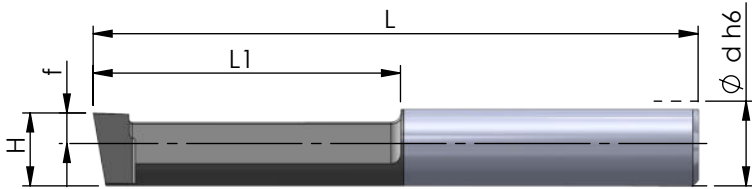
insert

D min. 6 - 7 mm
tolerance grade P9 / JS9

NPU.0... ..



NPU.0298.01.2 / NPU.0300.01.2 / NPU.030D.01.2



Abmessungen in mm

dimensions in mm

Bestellnummer part number	Nenngröße nominal size	Schneideinsatz nach DIN insert according DIN	D min.	B	R	H +0.05	f	L	L1	Ø d h6	t max.	K10F	AL41F	P18C	für Klemmhalter for toolholder type
NPU.0198.01.1	2		6	1.98	0.1	5.5	2.0	38	12.5	7	-	●	●	●	NHU...
NPU.0298.01.1	3	p9	7	2.98	0.1	6.2	2.7	38	12.5	7	-	●	●	●	
NPU.0298.01.2	3	DIN 6885	7	2.98	0.1	6.0	2.5	50	25	7	1.8	●	●	●	
NPU.0398.01.1	4	fester Sitz strong fit	7	3.98	0.1	6.2	2.7	40	15	7	-	●	●	●	
NPU.0398.02.2	4		7	3.98	0.2	6.2	2.7	50	25	7	-	●	●	●	
NPU.0498.02.2	5		7	4.98	0.2	5.8	2.3	50	25	7	-	●	●	●	
NPU.0200.01.1	2		6	2.00	0.1	5.5	2.0	38	12.5	7	-	●	●	●	
NPU.0300.01.1	3		7	3.00	0.1	6.2	2.7	38	12.5	7	-	●	●	●	
NPU.0300.01.2	3	JS9 DIN 6885	7	3.00	0.1	6.0	2.5	50	25	7	1.8	●	●	●	
NPU.0400.01.1	4		7	4.00	0.1	6.2	2.7	40	15	7	-	●	●	●	
NPU.0400.02.1	4	leichter Sitz slightly fit	7	4.00	0.2	6.2	2.7	40	15	7	-	●	●	●	
NPU.0400.02.2	4		7	4.00	0.2	6.2	2.7	50	25	7	-	●	●	●	
NPU.0500.02.2	5		7	5.00	0.2	5.8	2.3	50	25	7	-	●	●	●	

Weitere HM Sorten können Sie in der Sortenübersicht im Kapitel "Technische Hinweise" und der Preisliste finden.

Bestellbeispiel:
für Sorte AL41F:
NPU.0198.01.1/AL41F

More carbide grades you can find in the grades summary in the chapter "technical instructions" and in the price list.

order-example:
grade AL41F:
NPU.0198.01.1/AL41F