

**MINIMILL**

Nut- und Formzirkularfräsen

groove milling by circular interpolation

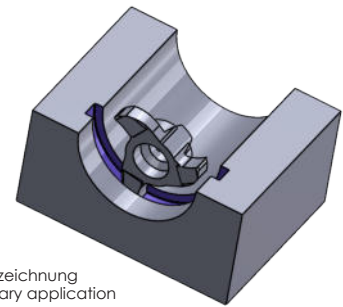
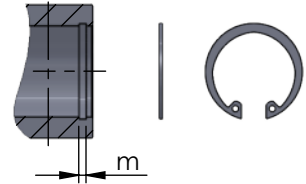
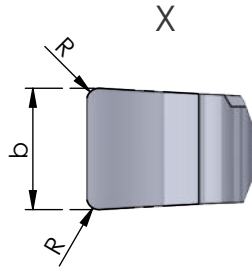
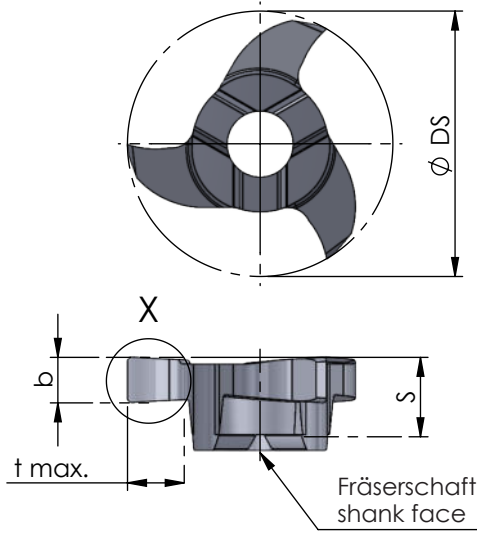
**Typ Z12**

Sicherungsringe DIN 471 / 472  
und Nutfräsen allgemein

D min. 12 mm  
t max. = 2.5

for circlip grooves DIN 471 / 472  
and groove milling general use

D min. 12 mm  
t max. = 2.5



Abmessungen in mm

dimensions in mm

| Bestellnummer<br>part number | D min. | Nut-Maß m<br>groove dim. m<br>DIN 471 / DIN 472 | S   | R   | Ø DS | b +0.02<br>(* b -0.02) | b (inch) | t max. | Zähnezahl<br>number of teeth | Material |       |      | für Frälerschaft<br>for milling shank |
|------------------------------|--------|-------------------------------------------------|-----|-----|------|------------------------|----------|--------|------------------------------|----------|-------|------|---------------------------------------|
|                              |        |                                                 |     |     |      |                        |          |        |                              | K10F     | AL41F | P18C |                                       |
| Z12.0100.01                  | 12     |                                                 | 3.5 | 0.1 | 11.7 | 1.00                   |          | 2.5    | 3                            | ●        |       |      | ZH10...                               |
| Z12.0110.00                  | 12     | 1.1                                             | 3.5 | -   | 11.7 | 1.21*                  |          | 2.5    | 3                            | ●        |       |      |                                       |
| Z12.0117.00                  | 12     | -                                               | 3.5 | -   | 11.7 | 1.17                   | 0.046"   | 2.5    | 3                            | ●        |       |      |                                       |
| Z12.0130.00                  | 12     | 1.3                                             | 3.5 | 0.1 | 11.7 | 1.41*                  |          | 2.5    | 3                            | ●        |       |      |                                       |
| Z12.0142.01                  | 12     | -                                               | 3.5 | 0.1 | 11.7 | 1.42                   | 0.056"   | 2.5    | 3                            | ●        |       |      |                                       |
| Z12.0150.02                  | 12     | -                                               | 3.5 | 0.2 | 11.7 | 1.50                   |          | 2.5    | 3                            | ●        |       |      |                                       |
| Z12.0157.02                  | 12     | -                                               | 3.5 | 0.2 | 11.7 | 1.57                   | 0.062"   | 2.5    | 3                            | ●        |       |      |                                       |
| Z12.0160.00                  | 12     | 1.6                                             | 3.5 | 0.1 | 11.7 | 1.71*                  |          | 2.5    | 3                            | ●        |       |      |                                       |
| Z12.0198.02                  | 12     | -                                               | 3.5 | 0.2 | 11.7 | 1.98                   | 0.078"   | 2.5    | 3                            | ●        |       |      |                                       |
| Z12.0200.00                  | 12     | -                                               | 3.5 | 0.2 | 11.7 | 2.00                   |          | 2.5    | 3                            | ●        |       |      |                                       |
| Z12.0238.02                  | 12     | -                                               | 3.5 | 0.2 | 11.7 | 2.39                   | 0.094"   | 2.5    | 3                            | ●        |       |      |                                       |
| Z12.0250.00                  | 12     | -                                               | 3.5 | 0.2 | 11.7 | 2.50                   |          | 2.5    | 3                            | ●        |       |      |                                       |
| Z12.0300.00                  | 12     | -                                               | 3.5 | 0.2 | 11.7 | 3.00                   |          | 2.5    | 3                            | ●        |       |      |                                       |

Weitere HM Sorten können Sie in der Sortenübersicht im Kapitel "Technische Hinweise" und der Preisliste finden.

Bestellbeispiel:  
für Sorte AL41F:  
Z12.0100.01/AL41F

More carbide grades you can find in the grades summary in the chapter "technical instructions" and in the price list.

order-example:  
grade AL41F:  
Z12.0100.01/AL41F