

**MINIMILL**

Nut- und Formzirkularfräsen

groove milling by circular interpolation

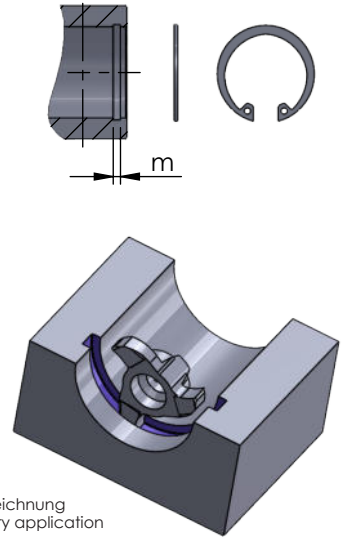
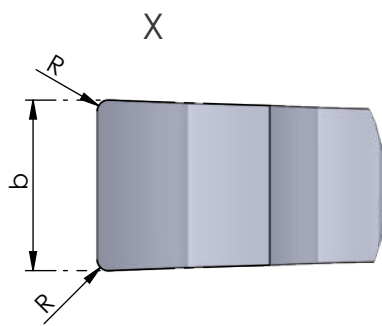
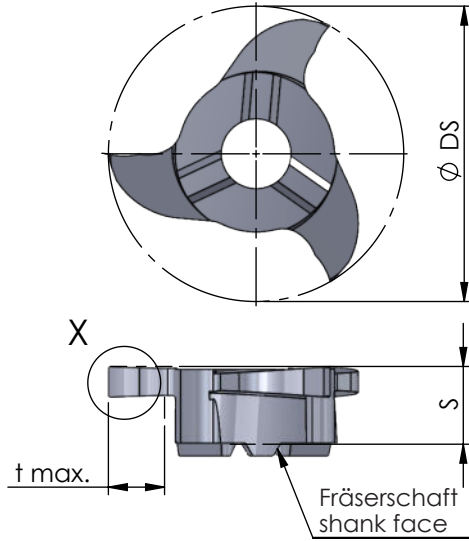
**Typ Z22**

Sicherungsringe DIN 471 / 472  
und Nutfräsen allgemein

D min. 22 mm  
t max. ≤ 4.5

for circlip grooves DIN 471 / 472  
and groove milling general use

D min. 22 mm  
t max. ≤ 4.5



Abmessungen in mm

dimensions in mm

Bestellnummer part number	D min.	Nut-Maß m groove dim. m DIN 471 / DIN 472	S	R	Ø DS	b +0.02 (* b -0.02)	b (inch)	t max.	Zähnezahl number of teeth				für Frälerschaft for milling shank
										K10F	AL41F	P18C	
Z22.0198.02	22	-	5.7	0.20	21.7	1.98	0.078"	4.5	3	●			ZH22...
Z22.0200.02	22	-	5.7	0.20	21.7	2.00		4.5	3	●			
Z22.0215.02	22	2.15	5.7	0.20	21.7	2.26*		4.5	3	●			
Z22.0238.02	22	-	5.7	0.20	21.7	2.39	0.094"	4.5	3	●			
Z22.0250.02	22	-	5.7	0.20	21.7	2.50		4.5	3	●			
Z22.0265.02	22	2.65	5.7	0.20	21.7	2.76*		4.5	3	●			
Z22.0300.02	22	-	5.7	0.20	21.7	3.00		4.5	3	●			
Z22.0315.02	22	3.15	5.7	0.20	21.7	3.26*		4.5	3	●			
Z22.0350.02	22	-	5.7	0.20	21.7	3.50		4.5	3	●			
Z22.0400.02	22	-	5.7	0.20	21.7	4.00		4.5	3	●			
Z22.0415.02	22	4.15	5.7	0.20	21.7	4.26*		4.5	3	●			
Z22.0475.02	22	-	5.7	0.20	21.7	4.75	0.187"	4.5	3	●			
Z22.0500.02	22	-	5.7	0.20	21.7	5.00		4.5	3	●			
Z22.0515.02	22	5.15	5.7	0.20	21.7	5.26*		4.5	3	●			

Weitere HM Sorten können Sie in der Sortenübersicht im Kapitel "Technische Hinweise" und der Preisliste finden.

Bestellbeispiel:  
für Sorte AL41F:  
Z22.0515.02/AL41F

More carbide grades you can find in the grades summary in the chapter "technical instructions" and in the price list.

order-example:  
grade AL41F:  
Z22.0515.02/AL41F