

## ULTRAMINI

Bohrungsbearbeitung  
ab  $\varnothing 0.2$  mm

grooving, boring and profiling  
starting at  $\varnothing 0.2$  mm

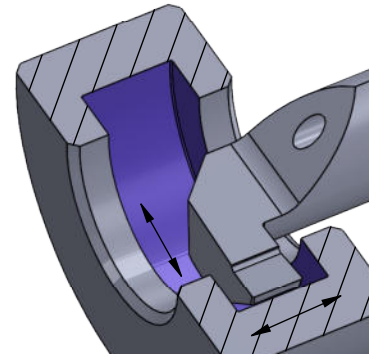
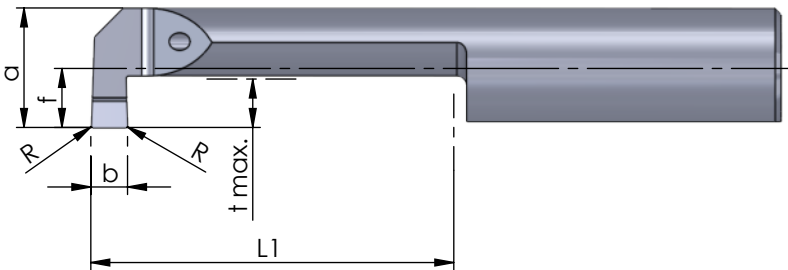
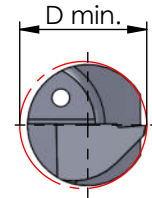
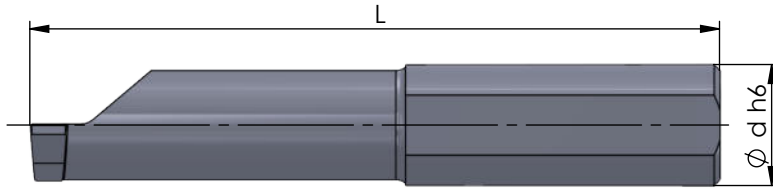
## Typ 10M

Stechdrehen  
mit Eckenradius und  
innerer Kühlmittelzufuhr

grooving  
with corner radius and  
with through coolant

D min. 10.5 mm  
Stechtiefe t max. 4.0 mm

D min. 10.5 mm  
depth of groove t max. 4.0 mm



Rechts (R): wie gezeichnet  
Links (L): spiegelbildlich

righthand (R): as shown  
lefthand version (L): mirror image

Abmessungen in mm

dimensions in mm

Bestellnummer part number	b +0.05	R	f	a	L	L1	t max.	D min.	Ø d h6	Klemmhalter Typ toolholder type				
										K10F	CN45F	AL41F	P07C	
R/L 10M0100-30	1.0	0.1	4.9	9.9	57	30	4.0	10.5	10		●			681...
R/L 10M0100-50	1.0	0.1	4.9	9.9	77	50	4.0	10.5	10		●			
R/L 10M0200-30	2.0	0.1	4.9	9.9	57	30	4.0	10.5	10		●			
R/L 10M0200-50	2.0	0.1	4.9	9.9	77	50	4.0	10.5	10		●			
R/L 10M0300-30	3.0	0.1	4.9	9.9	57	30	4.0	10.5	10		●			
R/L 10M0300-50	3.0	0.1	4.9	9.9	77	50	4.0	10.5	10		●			

Weitere HM Sorten können Sie in der Sortenübersicht im Kapitel "Technische Hinweise" und der Preisliste finden.

Bestellbeispiel:  
für rechte Ausführung und Sorte  
R10M0100-30/AL41F

More carbide grades you can find in the grades summary in the chapter "technical instructions" and in the price list.

order-example:  
righthand version and grade  
R10M0100-30/AL41F