

ULTRAMINI

Bohrungsbearbeitung
ab $\varnothing 0.2$ mm

grooving, boring and profiling
starting at $\varnothing 0.2$ mm

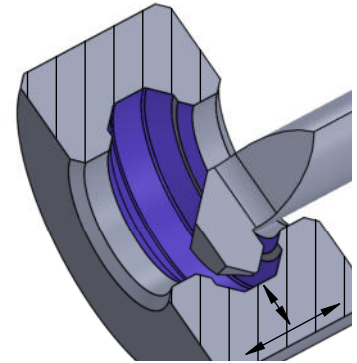
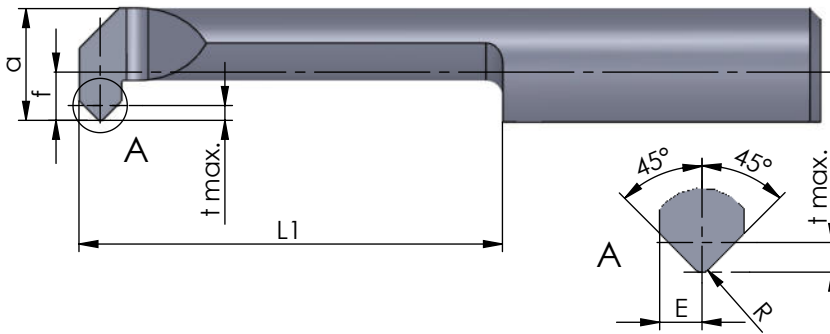
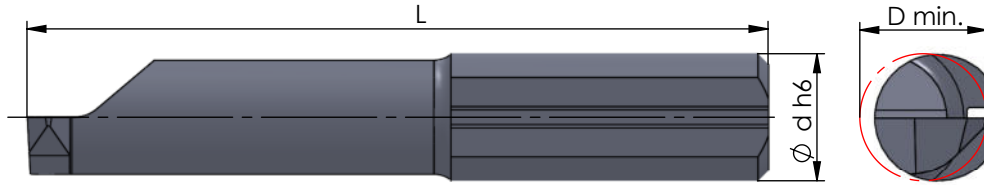
Typ 060

Ausdrehen und Fasen

D min. 3.0 - 6.8 mm

boring and chamfering

D min. 3.0 - 6.8 mm



Rechts (R): wie gezeichnet
Links (L): spiegelbildlich

righthand (R): as shown
lefthand version (L): mirror image

Abmessungen in mm

dimensions in mm

Bestellnummer part number	E	R	f	a	L	L1	t max.	D min.	Ø d h6	K10F	CN45F	AL41F	P07C	Klemmhalter Typ	toolholder type
R/L 060.3-10	0.6	0.2	0.7	2.7	24	10	0.4	3.0	4	●	●			645...	640... ...4
R/L 060.4-16	0.75	0.2	1.5	3.5	30	16	0.5	4.0	4	●	●				650... ...5
R/L 060.5-15	1	0.2	1.9	4.4	30	15	0.7	5.0	5	●	●			676...	660... ...6
R/L 060.5-20	1	0.2	1.9	4.4	35	20	0.7	5.0	5	●	●				670... 687... ...7
R/L 060.6-20	1	0.2	2.3	5.3	35	20	0.7	6.0	6	●	●				
R/L 060.6-25	1	0.2	2.3	5.3	40	25	0.7	6.0	6	●	●				
R/L 060.7-20	1	0.2	2.8	6.3	35	20	0.7	6.8	7	●	●				
R/L 060.7-40	1	0.2	2.8	6.3	55	40	0.7	6.8	7	●	●				

Weitere HM Sorten können Sie in der Sortenübersicht im Kapitel "Technische Hinweise" und der Preisliste finden.

Bestellbeispiel:
für rechte Ausführung und Sorte
R060.5-15/CN45F

More carbide grades you can find in the grades summary in the chapter "technical instructions" and in the price list.

order-example:
righthand version and grade
R060.5-15/CN45F