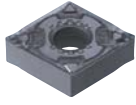
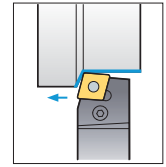
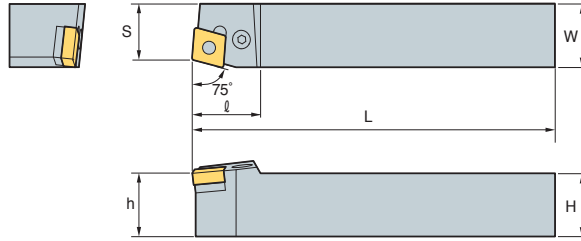


PCBNR/L



CN□□



75°

• R type insert (mm)

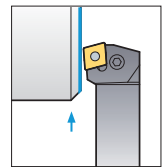
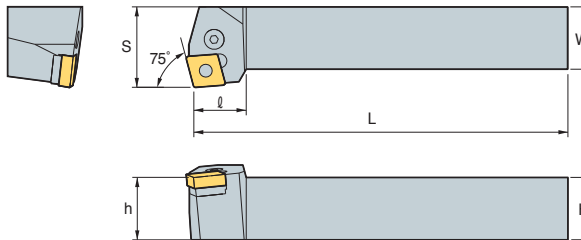
Designation	H	W	L	S	h	ℓ	Insert	Lever	Screw	Shim	Shim Pin	Wrench	Shim Pin Punch	
PCBNR/L	2020-K12	20	20	125	17	20	27	CN□□ 1204□□	LV4	VHX0821	SC42	SP4	HW30L	LSPS4
	2525-M12	25	25	150	22	25	27							
	3225-P12	32	25	170	22	32	27							
	2525-M16	25	25	150	22	25	33							
	3232-P16	32	32	170	27	32	33	CN□□ 1606□□	LV5	VHX0825	SC53	SP5	HW30L	LSPS6
	3232-P19	32	32	170	27	32	36	CN□□ 1906□□	LV6N	VHX1027N	SC63N	SP6N	HW40L	LSPS6
	4040-S19	40	40	250	35	40	36	CN□□ 2509□□	LV8N	VHX1236N	SC84N	SP8N	HW50L	LSPS8
	4040-S25	40	40	250	35	40	47							
4040-S25-5	40	40	250	35	40	47	CN□□ 2507□□	LV8N	VHX1236N	SC84N	SP8N	HW50L	LSPS8	
5050-T25	50	50	300	43	50	47	CN□□ 2509□□	LV8N	VHX1236N	SC84N	SP8N	HW50L	LSPS8	
PCBNR/L	2020-K12N	20	20	125	17	20	27	CN□□ 1204□□	LV4N	VHX0820N	SC42N	SP4N	HW30L	LSPS4
	2525-M12N	25	25	150	22	25	27							
	3225-P12N	32	25	170	22	32	27							
	2525-M16N	25	25	150	22	25	33	CN□□ 1606□□	LV6N	VHX1027N	SC63N	SP6N	HW40L	LSPS8
	3232-P16N	32	32	170	27	32	33	CN□□ 1906□□	LV6N	VHX1027N	SC63N	SP6N	HW40L	LSPS8
	3232-P19N	32	32	170	27	32	36	CN□□ 1906□□	LV6N	VHX1027N	SC63N	SP6N	HW40L	LSPS8

↻ Applicable inserts B28~B35

PCKNR/L



CN□□



95°

• R type insert (mm)

Designation	H	W	L	S	h	ℓ	Insert	Lever	Screw	Shim	Shim Pin	Wrench	Shim Pin Punch	
PCKNR/L	2020-K12	20	20	125	25	20	27	CN□□ 1204□□	LV4	VHX0821	SC42	SP4	HW30L	LSPS4
	2525-M12	25	25	150	32	25	27							
	3225-P12	32	25	170	40	32	30							
	3232-P16	32	32	170	40	32	26							
4040-S16	40	40	250	50	40	25	CN□□ 1606□□	LV5	VHX0825	SC53	SP5	HW30L	HW30L	
PCKNR/L	2020-K12N	20	20	125	25	20	27	CN□□ 1204□□	LV4N	VHX0820N	SC42N	SP4N	HW30L	LSPS4
	2525-M12N	25	25	150	32	25	27							
	3225-P12N	32	25	170	40	32	30							
	3232-P16N	32	32	170	40	32	26	CN□□ 1606□□	LV5N	VHX0820AN	SC53N	SP5N	HW30L	LSPS5

↻ Applicable inserts B28~B35



- Improved holders and parts ensure performance and durability
- “N” stand for New type (Holders and parts)

