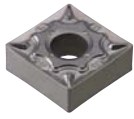
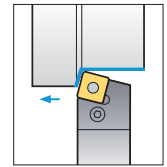
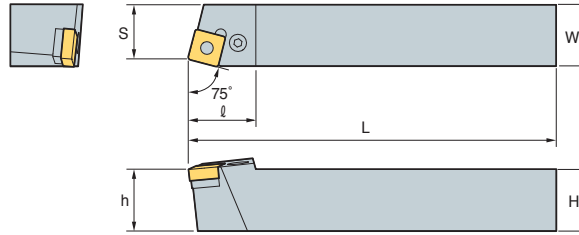


PSBNR/L



SN□□



75°

• R type insert
(mm)

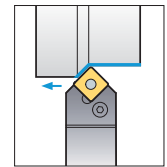
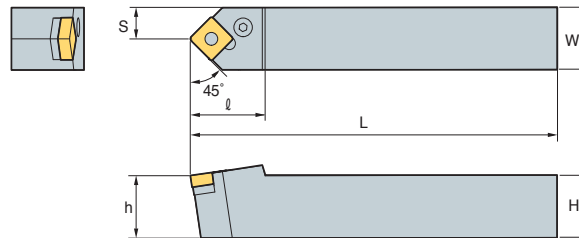
Designation	H	W	L	S	h	ℓ	Insert	Lever	Screw	Shim	Shim Pin	Wrench	Shim Pin Punch	
PSBNR/L	1616-H09	16	16	100	13	16	21	SN□□ 0903□□	LV3	VHX0617	SS32	SP3	HW25L	LSPS3
	2020-K09	20	20	125	17	20	23	SN□□ 1204□□	LV4	VHX0821	SS42	SP4	HW30L	LSPS4
	2020-K12	20	20	125	17	20	28							
	2525-M12	25	25	150	22	25	28							
	3225-P12	32	25	170	22	32	28	SN□□ 1506□□	LV5	VHX0825	SS53	SP5	HW30L	LSPS5
	3232-P12	32	32	170	27	32	28							
	2525-M15	25	25	150	22	25	35	SN□□ 1906□□	LV6N	VHX1027N	SS63N	SP6N	HW40L	LSPS6
	3232-P15	32	32	170	27	32	35							
	3232-P19	32	32	170	27	32	40	SN□□ 2507□□	LV8N	VHX1236N	SS84N	SP8N	HW50L	LSPS8
	4040-S19	40	40	250	35	40	40							
4040-S25	40	40	250	35	40	50	SN□□ 2507□□	LV8N	VHX1236N	SS84N	SP8N	HW50L	LSPS8	
4040-S25-6	40	40	250	35	40	50	SN□□ 2509□□							
5050-T25	50	50	300	43	50	50	SN□□ 2507□□							
5050-T25-6	50	50	300	43	50	46	SN□□ 2509□□							
PSBNR/L	1616-H09N	16	16	100	13	16	21	SN□□ 0903□□	LV3N	VHX0617N	SS32N	SP3	HW25L	LSPS3
	2020-K09N	20	20	125	17	20	23	SN□□ 1204□□	LV4N	VHX0820N	SS42N	SP4N	HW30L	LSPS4
	2020-K12N	20	20	125	17	20	28							
	2525-M12N	25	25	150	22	25	28							
	3225-P12N	32	25	150	22	25	28	SN□□ 1506□□	LV5N	VHX0820AN	SS53N	SP5N	HW30L	LSPS5
	3232-P12N	32	32	170	27	32	28							
	2525-M15N	25	25	150	22	25	35							

↻ Applicable inserts B44~B52

PSDNN



SN□□



45°

(mm)

Designation	H	W	L	S	h	ℓ	Insert	Lever	Screw	Shim	Shim Pin	Wrench	Shim Pin Punch	
PSDNN	1616-H09	16	16	100	8	16	23	SN□□ 0903□□	LV3	VHX0617	SS32	SP3	HW25L	LSPS3
	2020-K12	20	20	125	10	20	30	SN□□ 1204□□	LV4	VHX0821	SS42	SP4	HW30L	LSPS4
	2525-M12	25	25	150	12.5	25	30							
	3225-P12	32	25	170	12.5	32	30							
	3232-P12	32	32	170	16	32	40	SN□□ 1506□□	LV5	VHX0825	SS53	SP5	HW30L	LSPS5
	2525-M15	25	25	150	12.5	25	40							
	3232-P15	32	32	170	16	32	40	SN□□ 1906□□	LV6N	VHX1027N	SS63N	SP6N	HW40L	LSPS6
	3225-P19	32	25	170	12.5	32	40							
	3232-P19	32	32	170	16	32	40	SN□□ 2507□□	LV8N	VHX1236N	SS84N	SP8N	HW50L	LSPS8
	4040-S19	40	40	250	20	40	40							
	4040-S25	40	40	250	20	40	50	SN□□ 2507□□	LV8N	VHX1236N	SS84N	SP8N	HW50L	LSPS8
	5050-T25	50	50	300	25	50	50	SN□□ 2509□□						
	4040-S25-6	40	40	250	20	40	50	SN□□ 2509□□						
5050-T25-6	50	50	300	25	50	50								
PSDNN	1616-H09N	16	16	100	8	16	23	SN□□ 0903□□	LV3N	VHX0617N	SS32N	SP3	HW25L	LSPS3
	2020-K12N	20	20	125	10	20	30	SN□□ 1204□□	LV4N	VHX0820N	SS42N	SP4N	HW30L	LSPS4
	2525-M12N	25	25	150	12.5	20	30							
	3225-P12N	32	25	170	12.5	32	30							
	3232-P12N	32	32	170	16	32	40	SN□□ 1506□□	LV5N	VHX0820AN	SS53N	SP5N	HW30L	LSPS5
	2525-M15N	25	25	150	12.5	25	40							
	3232-P15N	32	32	170	16	32	40							

↻ Applicable inserts B44~B52