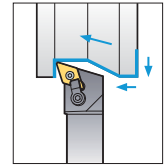
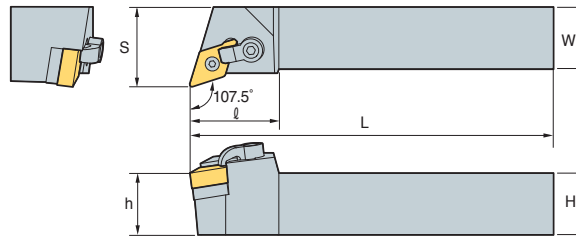


MDQNR/L



DN□□



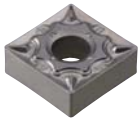
107.5°

• R type insert (mm)

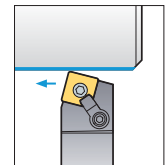
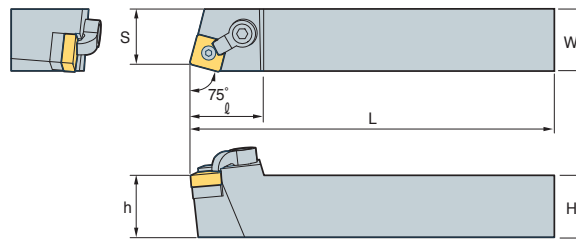
Designation	H	W	L	S	h	ℓ	Insert	Clamp	Clamp Screw	Shim	Shim Pin	Wrench
MDQNR/L 2525-M15-3	25	25	150	32	25	36	DN□□1504□□					
	32	32	170	40	32	36						
2525-M15	25	25	150	32	25	36	DN□□1506□□					
	32	32	170	40	32	36						

➔ Applicable inserts B36~B42

MSBNR/L



SN□□



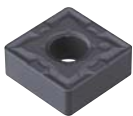
75°

• R type insert (mm)

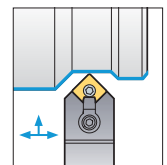
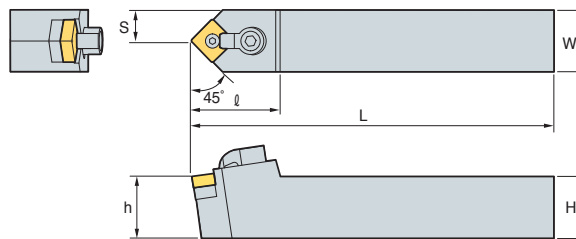
Designation	H	W	L	S	h	ℓ	Insert	Clamp	Clamp Screw	Shim	Shim Pin	Wrench
MSBNR/L 2020-K12	20	20	125	17	20	32	SN□□1204□□					
2525-M12	25	25	150	22	25	32						
2525-M15	25	25	150	22	25	35	SN□□1506□□					
3232-P15	32	32	170	22	32	35						
3232-P19	32	32	170	27	32	40	SN□□1906□□					
4040-S19	40	40	250	35	40	40						

➔ Applicable inserts B44~B52

MSDNN



SN□□



45°

(mm)

Designation	H	W	L	S	h	ℓ	Insert	Clamp	Clamp Screw	Shim	Shim Pin	Wrench
MSDNN 1616-H09	16	16	100	8	16	28	SN□□0903□□					
	2020-K09	20	20	125	10	20						
2020-K12	20	20	125	10	20	32	SN□□1204□□					
2525-M12	25	25	150	12.5	25	32						
3225-P12	32	25	170	12.5	32	32	SN□□1506□□					
2525-M15	25	25	150	12.5	25	35						
3225-P15	32	25	170	12.5	32	35	SN□□1506□□					
3232-P15	32	32	170	16	32	35						
4040-S15	40	40	250	20	40	35	SN□□1906□□					
3232-P19	32	32	170	16	32	42						
4040-S19	40	40	250	20	40	42	SN□□1906□□					

➔ Applicable inserts B44~B52