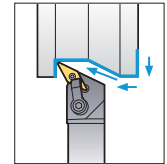
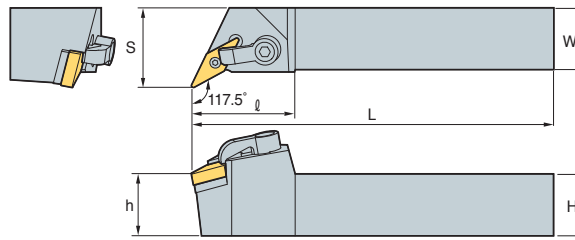


# MVQNR/L



VN□□



117.5°

· R type insert (mm)

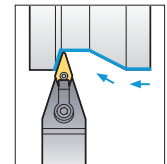
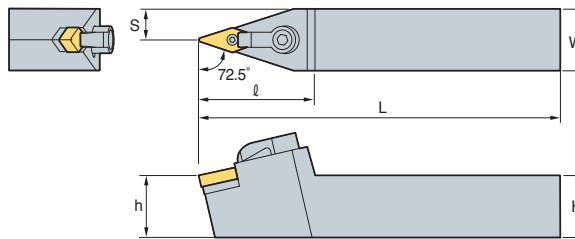
Designation	H	W	L	S	h	ℓ	Insert	Clamp	Clamp Screw	Shim	Shim Pin	Wrench
MVQNR/L 2020-K16	20	20	125	25	20	42	VN□□1604□□					
2525-M16	25	25	150	32	25	42						
3232-P16	32	32	170	40	32	37						

↻ Applicable inserts B60~B61

# MVVNN



VN□□



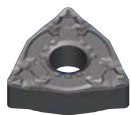
72.5°

(mm)

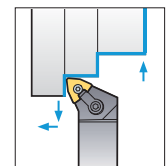
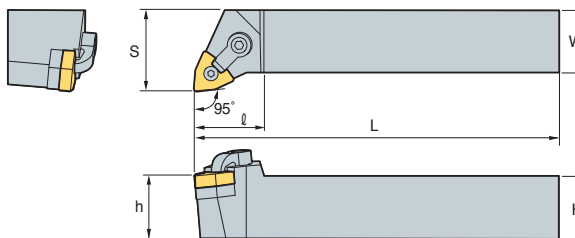
Designation	H	W	L	S	h	ℓ	Insert	Clamp	Clamp Screw	Shim	Shim Pin	Wrench
MVVNN 2020-K16	20	20	125	25	20	42	VN□□1604□□					
2525-M16	25	25	150	32	25	42						

↻ Applicable inserts B60~B61

# MWLNR/L



WN□□



95°

· R type insert (mm)

Designation	H	W	L	S	h	ℓ	Insert	Clamp	Clamp Screw	Shim	Shim Pin	Wrench
MWLNR/L 2020-K06	20	20	125	25	20	32	WN□□0604□□					
2525-M06	25	25	150	32	25	32						
3232-P06	32	32	170	40	32	32						
2020-K08	20	20	125	25	20	32	WN□□0804□□					
2525-M08	25	25	150	32	25	32						
3232-P08	32	32	170	40	32	32						

↻ Applicable inserts B62~B65