

MGT Plus

Universal tools for Grooving / Parting Off / Turning

- Various chip breakers with good chip control
- Improved tool life and workpiece surface roughness via Consistent edge treatment application



MGT Plus

The MGT Plus is a versatile tool for Multi-function Grooving / Parting off / Turning

The MGT Plus insert has excellent chipping resistance and fracture resistance with its high toughness substrate based new grade. Tool life and workpiece surface roughness will get improved with the consistent edge treatment application. In addition, the new chip breakers, MM, GM, RM ensure excellent chip control in various machining such as grooving, parting off, turning, copying, relief cutting and so on. The symbol curved in each MGT Plus insert means KORLOY's identity for its exclusive design.

The MGT Plus holder gives great convenience to customers with its multiple structures for various cutting (external cutting, internal cutting, parting and cutting etc.), and it is interchangeable for the MGT Plus inserts. Also, its stable clamping system provides high cutting performance and long tool life in even various cutting conditions.

» **High chipping resistance and fracture resistance**

- Applying high toughness new grade

» **Additional edge treatment for its consistency**

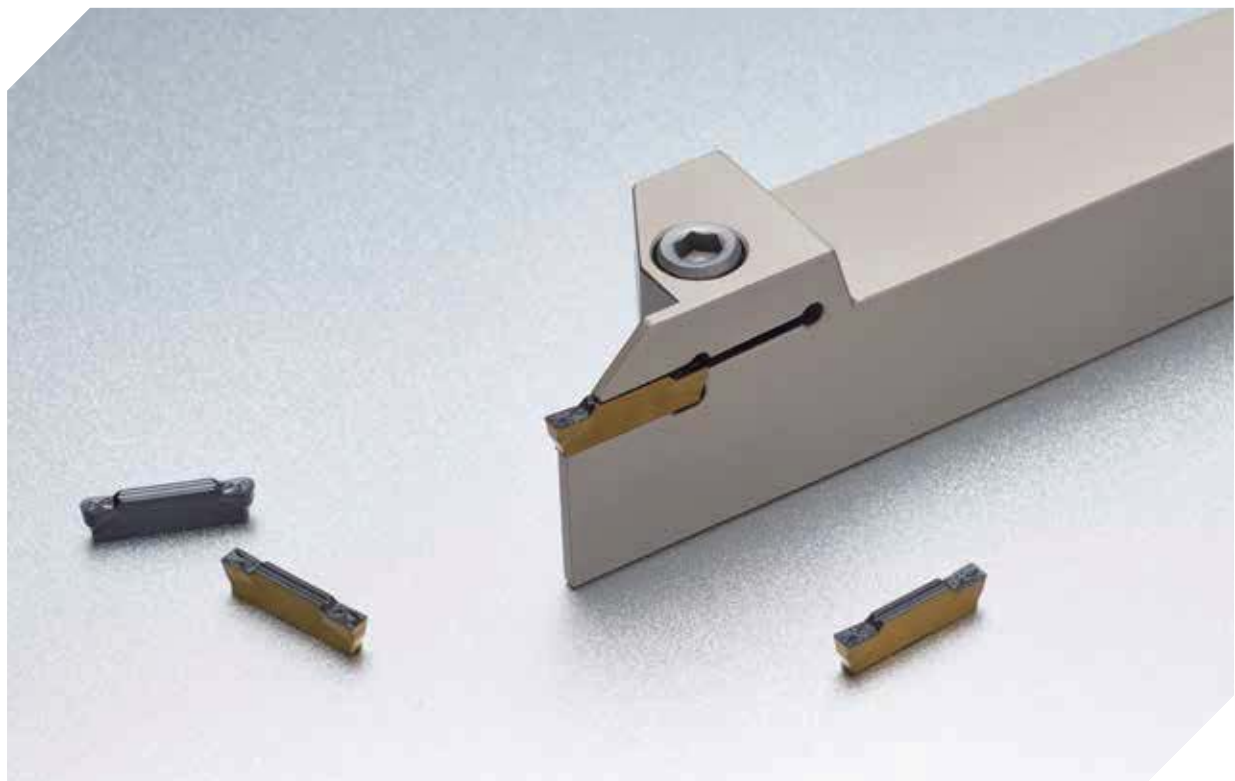
- Improvement at tool life and workpiece surface roughness

» **Excellent chip control**

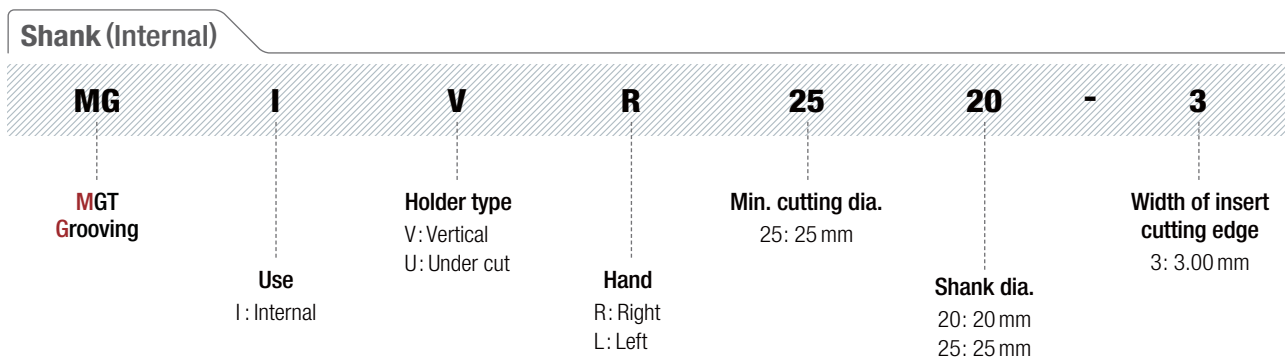
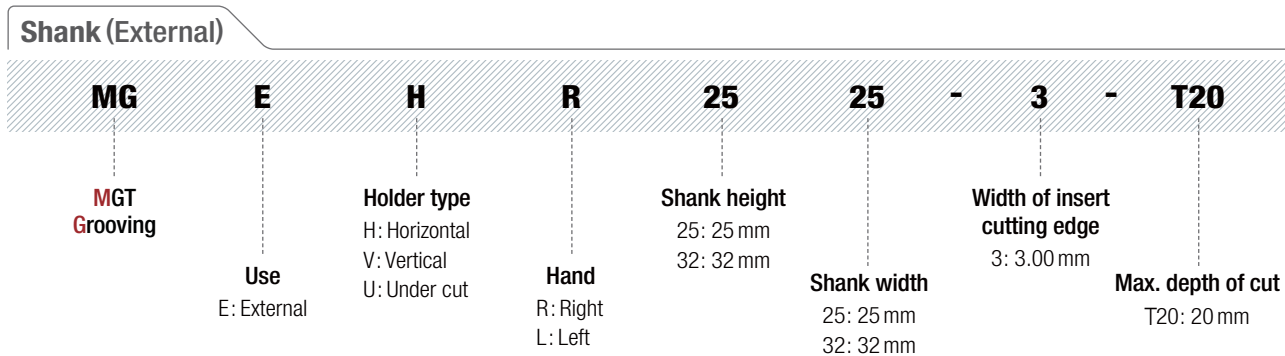
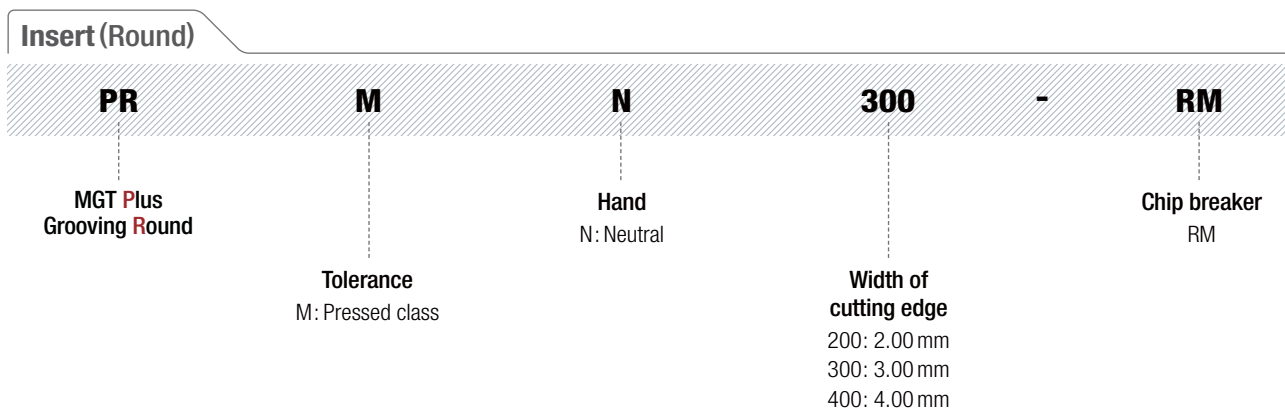
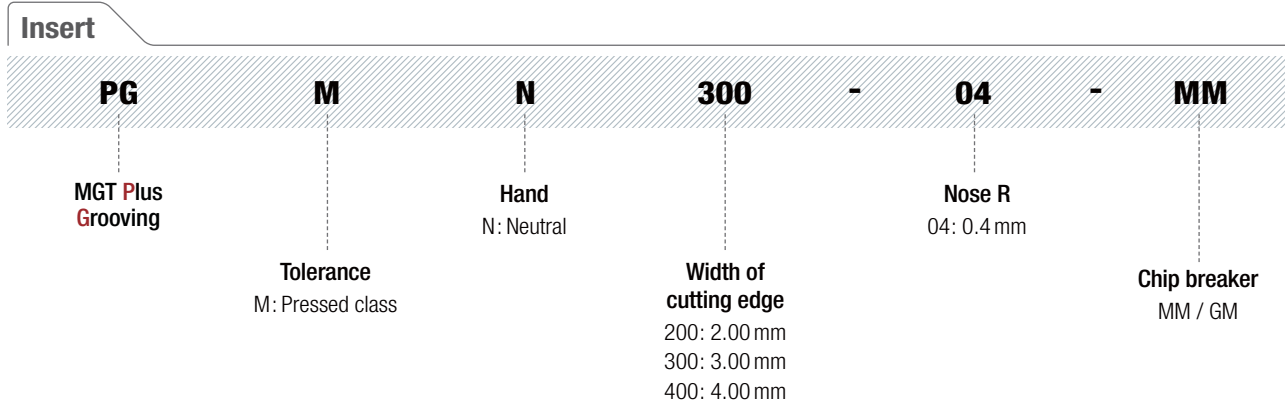
- Various chip breakers for good chip control

» **Applicable for various MGT holders**

- Providing great convenience with the various shaped MGT holders applicable

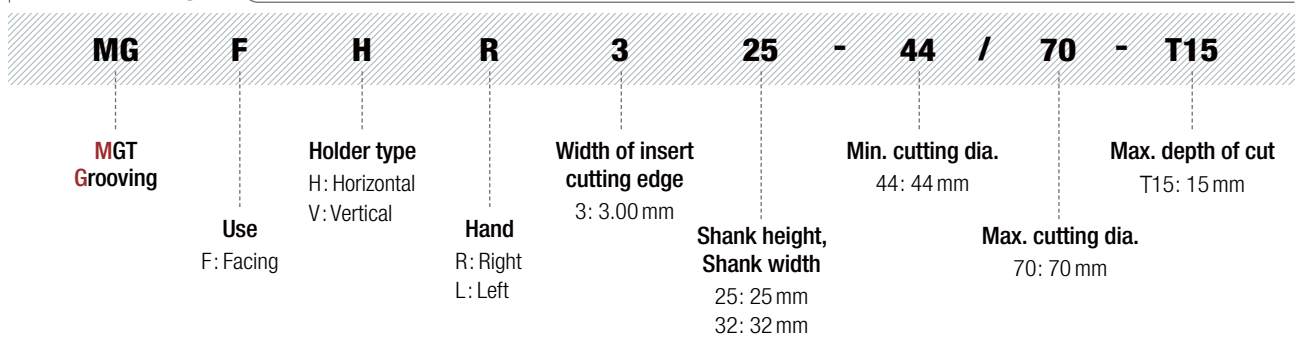


Code system

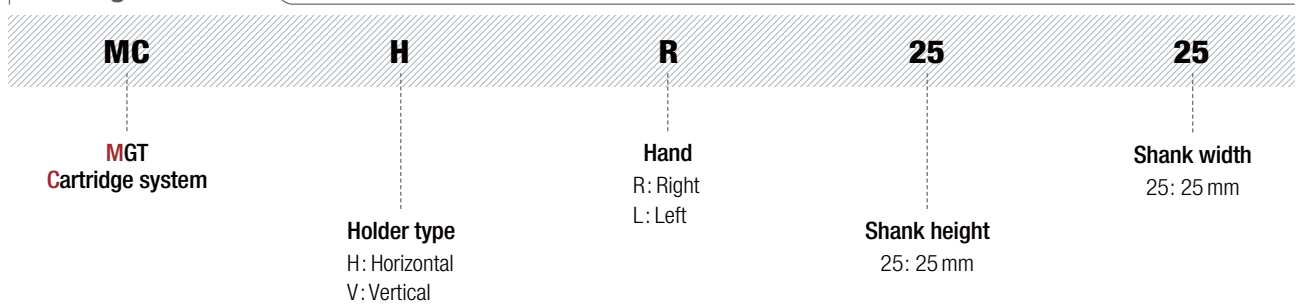


Code system

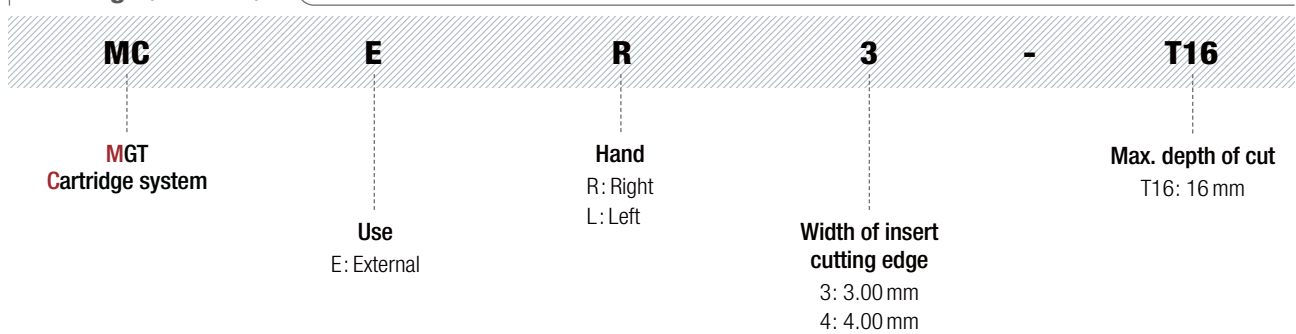
Shank (Facing)



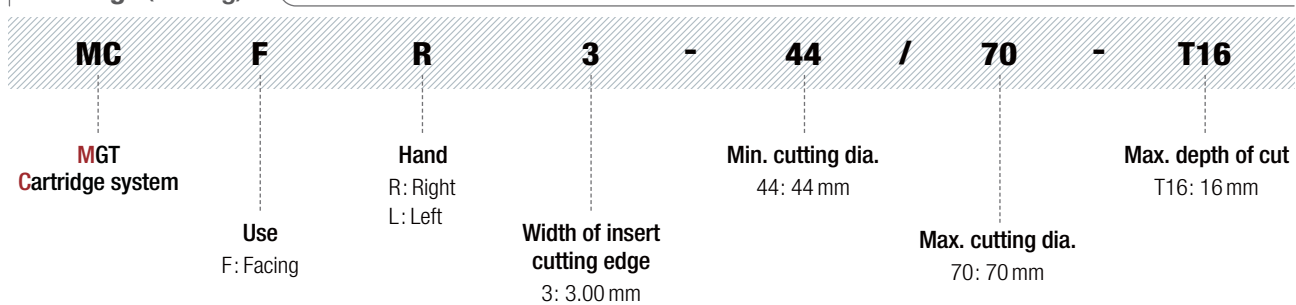
Cartridge (Holder)



Cartridge (External)



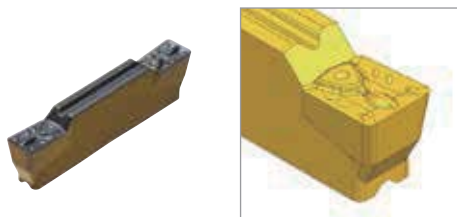
Cartridge (Facing)



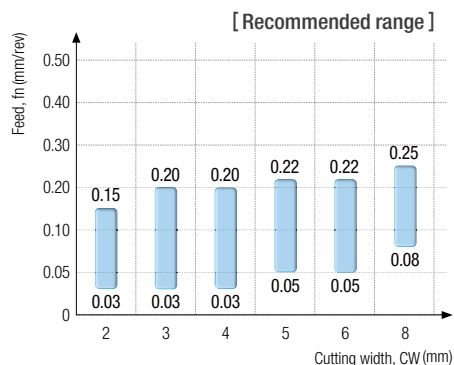
Features of Chip breaker

⊙: 1st recommendation ○: 2nd recommendation

MM: Multi Medium



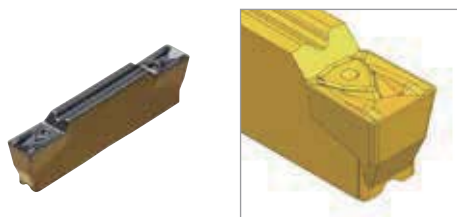
- For grooving, parting and turning
- Bumps on the rake surface
- Straight cutting edge
- Various workpieces



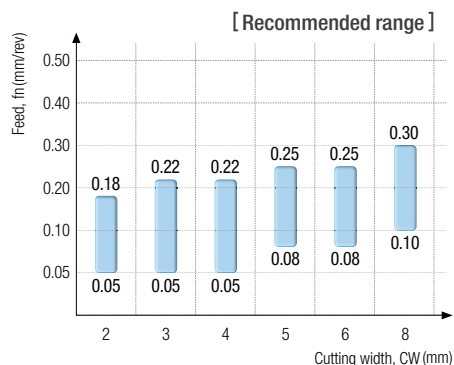
Recommended cutting											
External					Internal				Facing		Special
Grooving	Parting	Turning	Copying	Relief	Grooving	Turning	Copying	Relief	Grooving	Turning	
⊙	○	⊙			○	○			○	○	

Recommended workpiece				
P	M	K	N	S
⊙	○	○		○

GM: Groove Medium



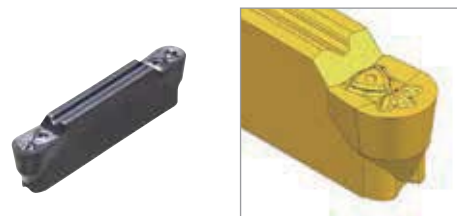
- For grooving and parting
- Straight cutting edge
- Bumps on the rake surface
- Various workpieces
- High depth of cut machining
- For Hard-to-cut material Cutting



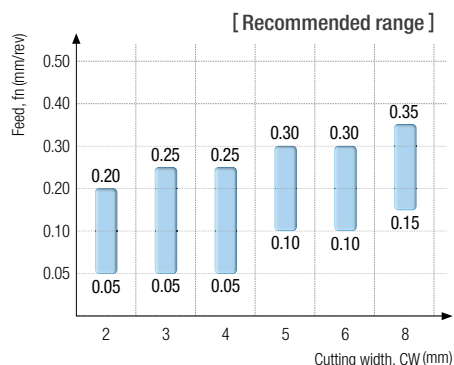
Recommended cutting											
External					Internal				Facing		Special
Grooving	Parting	Turning	Copying	Relief	Grooving	Turning	Copying	Relief	Grooving	Turning	
⊙	⊙				○				○		

Recommended workpiece				
P	M	K	N	S
⊙	⊙	○		○

RM: Relief Medium



- For copying and relief cutting
- Round cutting edge
- Bumps on the rake surface
- Excellent surface finish



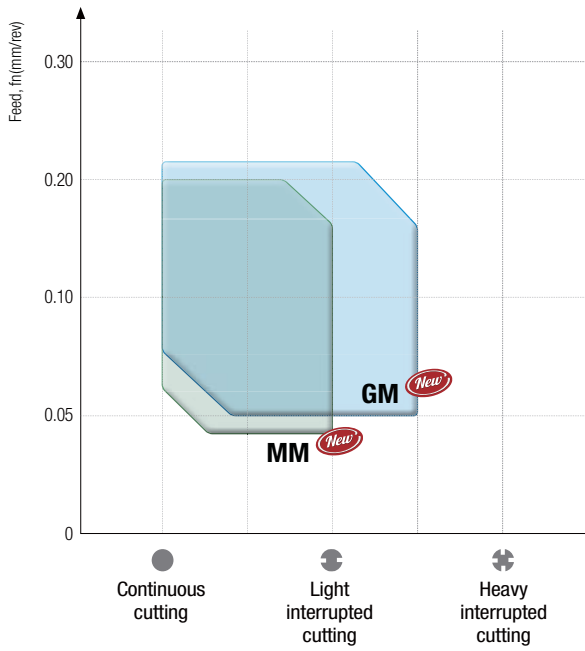
Recommended cutting											
External					Internal				Facing		Special
Grooving	Parting	Turning	Copying	Relief	Grooving	Turning	Copying	Relief	Grooving	Turning	
○			⊙	⊙			⊙	⊙			

Recommended workpiece				
P	M	K	N	S
⊙	○	○		○

Cutting range

Cutting width (mm) = Based on 3

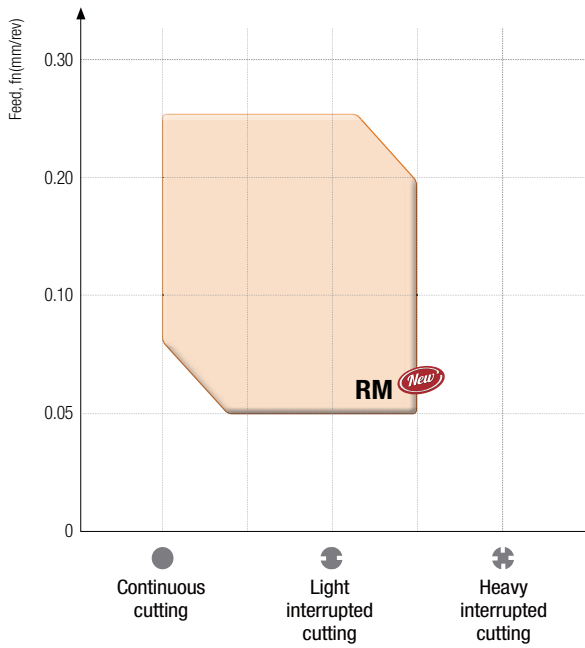
Grooving



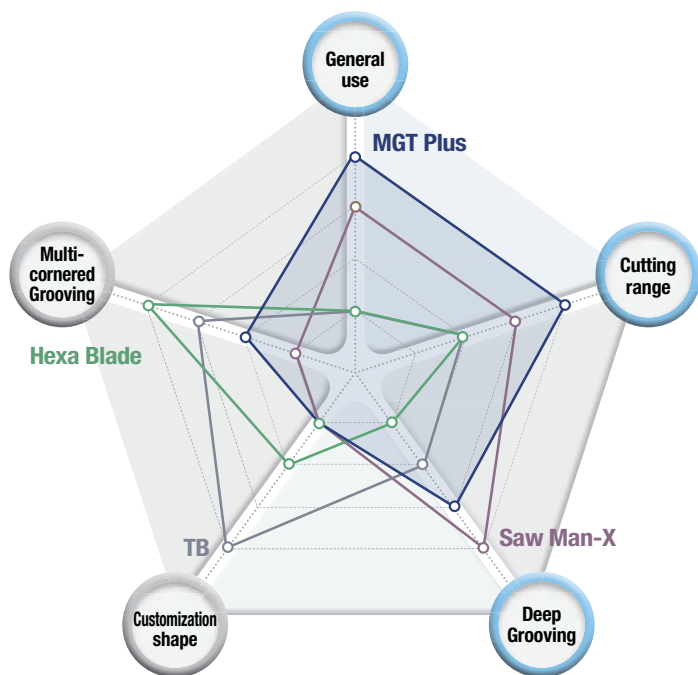
Turning



Profile



Tool selection guide



MGT Plus New

- 2-cornered insert
- Various applications
- Universal use



Saw Man-X New

- 1 cornered insert
- Optimal for interrupted and high feed Parting
- Deep Grooving



TB

- Precision typed and 3 cornered insert
- Optimal for automated machining
- Precision Grooving



Hexa Blade New





- Precision typed and 6 cornered insert
- High cost efficiency
- Precision Grooving and multi-cornered Grooving



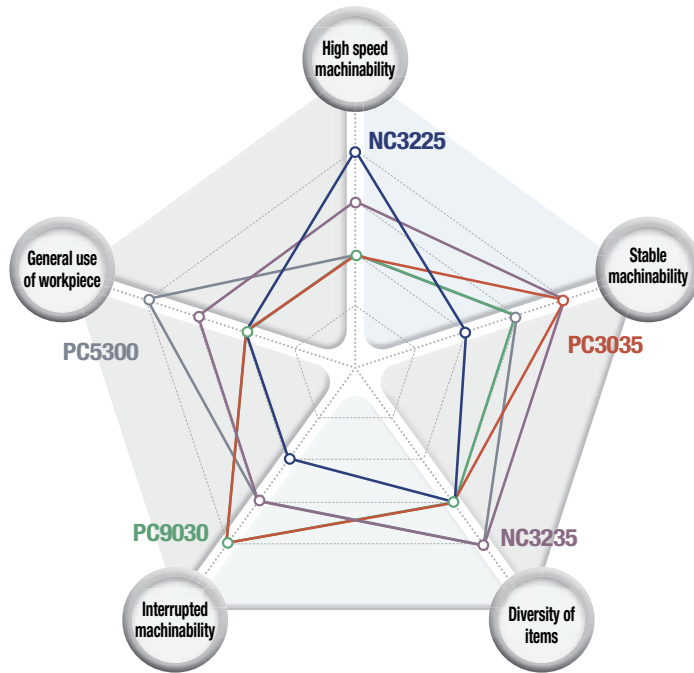
Tool	General use	Cutting range	Deep Grooving	Customization shape	Multi-cornered Grooving
MGT Plus New	★★★★★	★★★★★	★★★	★	★★
Saw Man-X New	★★★	★★★	★★★★★	★	★
TB	★	★★	★★	★★★★★	★★★
Hexa Blade New	★	★★	★	★★	★★★★★

Cutting width and cutting depth by tools

◎: 1st recommendation ○: 2nd recommendation

Tool	Cutting width (mm)				No. of edge	Machining				Feature
	2	4	6	8		External	Internal	Facing	Parting	
	Cutting depth maximum (mm)									
MGT Plus New 	1.5	8		28	2	◎	○	○	◎	<ul style="list-style-type: none"> • Various application • Wide cutting range
Saw Man-X New 	2	6		60	1	○			◎	<ul style="list-style-type: none"> • Various lead angles • Minimizing burr
TB 	1.25	6		6.5	3	◎			○	<ul style="list-style-type: none"> • Precision type • Optimal for automated machining
Hexa Blade New 	1.78	4		5	6	◎			○	<ul style="list-style-type: none"> • Precision type • High cost efficient cutting

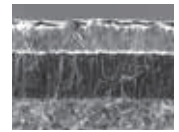
Grade selection guide



NC3225

P M K N S

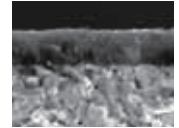
- CVD coating, general Steel and forged Steel
- Great wear resistance and chipping resistance



PC3035

P M K N S

- PVD coating, Steel material exclusive
- Good wear resistance and cutting stability



NC3235

P M K N S

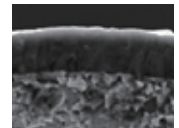
- CVD coating, general Steel and Stainless steel interrupted cutting
- Good chipping resistance and fracture resistance



PC9030

P M K N S

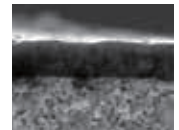
- PVD coating, medium to roughing interrupted cutting for Stainless steel
- Good chipping resistance and welding resistance



PC5300

P M K N S

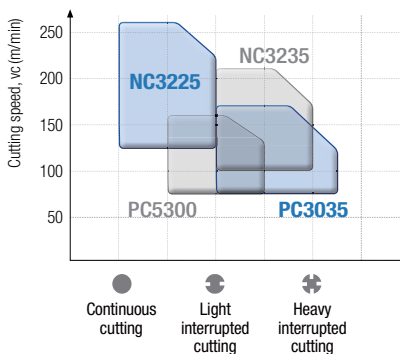
- PVD coating, universal grade
- Interrupted cutting and good wear resistance



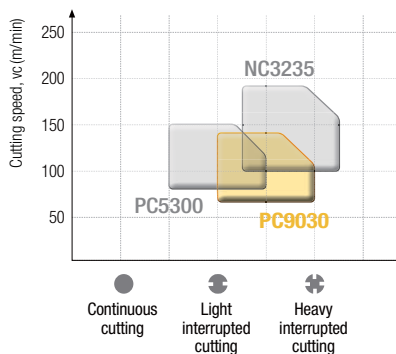
Grade	High speed machinability	Stable machinability	Diversity of items	Interrupted machinability	General use of workpiece
NC3225	★★★★★	★★	★★★	★★	★★
PC3035	★★	★★★★★	★★★	★★★★★	★★
NC3235	★★★	★★★★★	★★★★★	★★★	★★★
PC9030	★★	★★★	★★★	★★★★★	★★
PC5300	★★	★★★	★★★★★	★★★	★★★★★

Grade application range

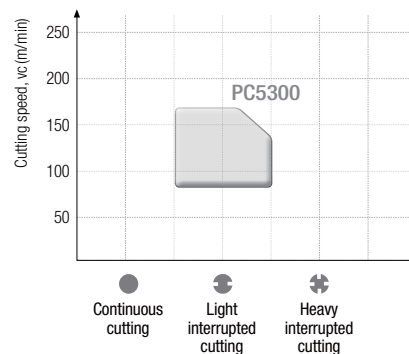
P Steel



M Stainless steel



K Cast iron



Recommended cutting conditions

Cutting width (mm) = Based on 3

Workpiece					Grade					Chip breaker						
ISO	Workpiece material	ISO	AISI	Brinell hardness (HB)	CVD		PVD			Grooving			Turning			
					NC3225	NC3235	PC3035	PC5300	PC9030	MM	GM	RM	MM	RM		
					vc (m/min)					fn (mm/rev)			fn (mm/rev)			
P	Carbon steel	C = 0.25%	C25	1025	125	180	140	110	110	110	0.20	0.22	0.25	0.20	0.16	0.20
						275	215	170	170	170	0.12	0.14	0.15	0.16	0.20	
						370	290	230	230	230	0.03	0.05	0.05	0.12	0.15	
		C = 0.35%	C35	1035	160	170	130	100	100	100	0.20	0.22	0.25	0.20	0.20	
						255	200	155	155	155	0.12	0.14	0.15	0.16	0.20	
						340	270	210	210	210	0.03	0.05	0.05	0.12	0.15	
	C = 0.45%	C45	1045	170	150	120	90	90	90	0.20	0.22	0.25	0.20	0.25		
					235	185	145	145	145	0.12	0.14	0.15	0.16	0.20		
					320	250	200	200	200	0.03	0.05	0.05	0.12	0.15		
	Low alloy steel ≤ 5%	Non-hardened	42CrMo4	4140	180	130	100	80	80	80	0.20	0.22	0.25	0.18	0.23	
						195	155	120	120	120	0.12	0.14	0.15	0.14	0.18	
		Hardened and tempered	-	-	4145	350	80	60	50	50	50	0.20	0.22	0.25	0.18	0.23
							115	90	75	75	75	0.12	0.14	0.15	0.14	0.18
							150	120	100	100	100	0.03	0.05	0.05	0.10	0.13
							200	160	120	120	120	0.20	0.22	0.20	0.18	0.23
	High alloy steel < 5%	Annealed	-	D2	200	100	80	60	60	60	0.20	0.22	0.20	0.18	0.23	
						150	120	90	90	90	0.12	0.14	0.12	0.14	0.18	
		Hardened tool steel	X40CrMoV5-1	H13	352	80	60	50	50	50	0.20	0.22	0.20	0.18	0.23	
120						95	75	75	75	0.12	0.14	0.12	0.14	0.18		
160						130	100	100	100	0.03	0.05	0.03	0.10	0.13		
200						160	120	120	120	0.20	0.22	0.20	0.18	0.23		
M	Austenite series	X5CrNi18-9	304	160 ~ 180	-	100	-	80	80	0.15	0.15	0.18	0.18	0.23		
					-	145	-	115	115	0.09	0.09	0.13	0.14	0.18		
					-	190	-	150	150	0.03	0.03	0.08	0.10	0.13		
		X5CrNiMo17-12-2	316	160 ~ 180	-	100	-	80	80	0.15	0.15	0.18	0.18	0.23		
					-	145	-	115	115	0.09	0.09	0.13	0.14	0.18		
					-	190	-	150	150	0.03	0.03	0.08	0.10	0.13		
K	Gray cast iron	Low tensile strength	150	No25B	≤ 212	-	-	-	100	-	0.25	0.25	0.25	0.18	0.23	
						-	-	-	150	-	0.17	0.17	0.15	0.14	0.18	
						-	-	-	200	-	0.09	0.09	0.05	0.10	0.13	
		High tensile strength	250 350	No35B No50B	≤ 248 ≤ 277	-	-	-	80	-	0.25	0.25	0.25	0.18	0.23	
						-	-	-	125	-	0.17	0.17	0.15	0.14	0.18	
						-	-	-	170	-	0.09	0.09	0.05	0.10	0.13	
	Ductile cast iron	Ferritic	500-7	65-45-12	170 ~ 241	-	-	-	70	-	0.25	0.25	0.25	0.20	0.25	
						-	-	-	105	-	0.17	0.17	0.15	0.16	0.20	
						-	-	-	140	-	0.09	0.09	0.05	0.12	0.15	
		Pearlitic	600-3	80-55-06	192 ~ 269	-	-	-	50	-	0.25	0.25	0.25	0.20	0.25	
						-	-	-	80	-	0.17	0.17	0.15	0.16	0.20	
						-	-	-	110	-	0.09	0.09	0.05	0.12	0.15	
Martensitic	700-2	100-70-03	229 ~ 302	-	-	-	50	-	0.20	0.22	0.20	0.20	0.25			
				-	-	-	80	-	0.12	0.14	0.12	0.16	0.20			
				-	-	-	110	-	0.03	0.05	0.03	0.12	0.15			
S	Inconel	-	-	200	-	-	-	20	-	0.10	0.10	0.12	0.13	0.16		
					-	-	-	35	-	0.06	0.06	0.10	0.11	0.14		
					-	-	-	50	-	0.03	0.03	0.08	0.09	0.12		
		-	-	250 350	-	-	-	-	20	-	0.10	0.10	0.12	0.13	0.16	
						-	-	-	35	-	0.06	0.06	0.10	0.11	0.14	
						-	-	-	50	-	0.03	0.03	0.08	0.09	0.12	
	Titanium alloy	-	-	3400	-	-	-	60	-	0.10	0.10	0.18	0.18	0.20		
					-	-	-	80	-	0.06	0.06	0.13	0.14	0.18		
					-	-	-	100	-	0.03	0.03	0.08	0.10	0.16		
		-	-	950	-	-	-	-	30	-	0.10	0.10	0.18	0.18	0.20	
						-	-	-	45	-	0.06	0.06	0.13	0.14	0.18	
						-	-	-	60	-	0.03	0.03	0.08	0.10	0.16	

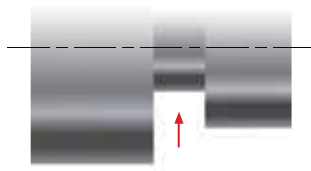
Performance evaluation

Shaft cutting

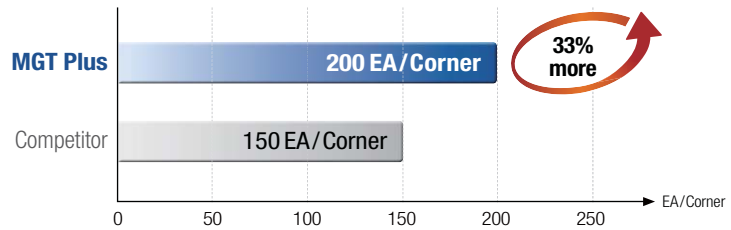
Workpiece Stainless steel (X5CrNi18-9)

Cutting condition $vc(m/min) = 120$, $fn(mm/rev) = 0.12$, $ap(mm) = 5$, wet

Tool **Insert** PGMN400-03-GM (PC5300) **Holder** MGEHR2525-4-T15



[Grooving]

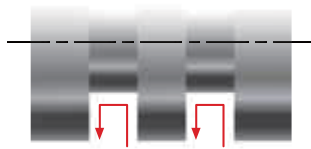


Multi-functional cutting

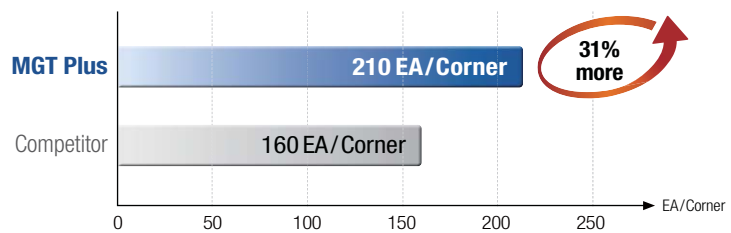
Workpiece Carbon steel (C45)

Cutting condition $vc(m/min) = 170$, $fn(mm/rev) = 0.15$, $ap(mm) = 2$, wet

Tool **Insert** PGMN300-04-MM (PC5300) **Holder** MGEHR2525-3-T13



[Repetition of Turning after Grooving]



MGT Plus ↔ MGT insert interchangeable chart


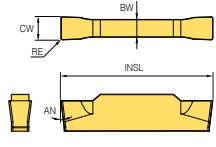

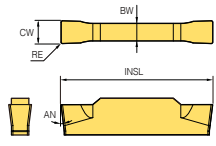

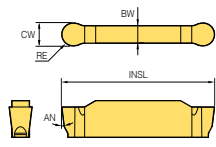
MGT Plus	MGT	MGT Plus	MGT
PGMN150 - □□	MGMN150 - □□	PRMN200 - □□	MRMN200 - □□
PGMN200 - □□	MGMN200 - □□	PRMN300 - □□	MRMN300 - □□
PGMN250 - □□	MGMN250 - □□	PRMN400 - □□	MRMN400 - □□
PGMN300 - □□	MGMN300 - □□	PRMN500 - □□	MRMN500 - □□
PGMN400 - □□	MGMN400 - □□	PRMN600 - □□	MRMN600 - □□
PGMN500 - □□	MGMN500 - □□	PRMN800 - □□	MRMN800 - □□
PGMN600 - □□	MGMN600 - □□		
PGMN800 - □□	MGMN800 - □□		

※ The MGT Plus insert is compatible with MGT insert.

It is available to use MGT Plus insert clamping on the MGT holder.

Insert

※ AN = 7°

Picture	Designation	Coated					Dimension (mm)				Geometry
		NC3225	NC3235	PC3035	PC5300	PC9030	CW	RE	INSL	BW	
	PGMN 200-02-MM	●	●	●	●	●	2.00	0.2	16	1.6	
	300-04-MM	●	●	●	●	●	3.00	0.4	21	2.35	
	400-04-MM	●	●	●	●	●	4.00	0.4	21	3.3	
	500-08-MM	●	●	●	●	●	5.00	0.8	26	4.1	
	600-08-MM	●	●	●	●	●	6.00	0.8	26	5.0	
	800-08-MM	●	●	●	●	●	8.00	0.8	31	6.0	
	PGMN 150-015-GM	●	●	●	●	●	1.50	0.15	16	1.2	
	200-02-GM	●	●	●	●	●	2.00	0.2	16	1.6	
	250-02-GM	●	●	●	●	●	2.50	0.2	18.5	2.0	
	300-03-GM	●	●	●	●	●	3.00	0.3	21	2.35	
	400-03-GM	●	●	●	●	●	4.00	0.3	21	3.3	
	PRMN 200-RM	●	●	●	●	●	2.00	1.0	16	1.6	
	300-RM	●	●	●	●	●	3.00	1.5	21	2.35	
	400-RM	●	●	●	●	●	4.00	2.0	21	3.3	
	500-RM	●	●	●	●	●	5.00	2.5	26	4.1	
	600-RM	●	●	●	●	●	6.00	3.0	26	5.0	
	800-RM	●	●	●	●	●	8.00	4.0	31	6.0	

●: Stock item

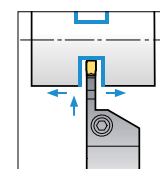
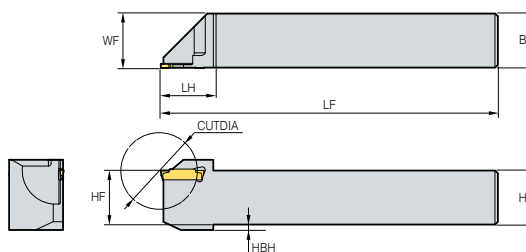
Holder

MGEHR/L-X00A (Auto Tool)

External _ automatic lathe



PGMN PRMN



· R type holder

(mm)

Designation	Stock		H=HF	B	CUT DIA	WF	LH	LF	HBH	Applicable insert	Screw	Wrench
	R	L										
MGEHR/L	1010-X15A	●		10	10	20	10.2	18	125	2	ETNA0412	TW15L
	1212-X15A	●		12	12	25	12.2	19.5	125	2		
	1010-X20A	●		10	10	20	10.25	18	125	2		
	1212-X20A	●		12	12	25	12.25	19.5	125	2		
	1616-X20A			16	16	32	16.25	25	125	2		
	1010-X25A			10	10	20	10.3	20	125	2		
	1212-X25A	●		12	12	25	12.3	20	125	2		
	1616-X25A			16	16	32	16.3	25	125	-		

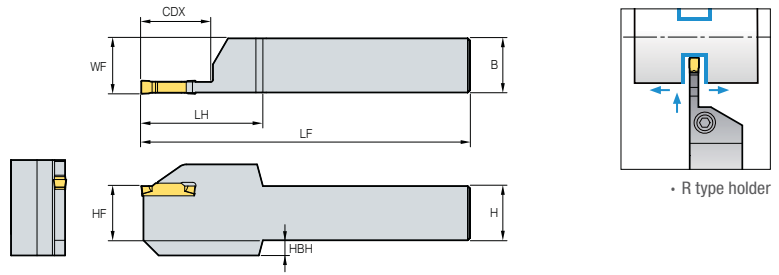
●: Stock item

MGEHR/L


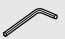


PGMN PRMN

External _ Grooving, Parting, Turning, Copying



(mm)

Designation	Stock		H=HF	B	CDX	WF	LH	LF	HBH	Applicable insert	Screw 	Wrench 
	R	L										
MGEHR/L 1616-1.5	●	●	16	16	14	16.2	34.5	100	-	PGMN150-□-□	LTX0514	TW20L
2020-1.5	●	●	20	20	14	20.2	34.5	125	-			
2525-1.5	●	●	25	25	14	25.2	34.5	150	-			
1212-2	●		12	12	14	12.25	32	100	-	PGMN200-□-□ PRMN200-□	MHA0512	HW40L
1616-2	●	●	16	16	14	16.25	36.5	100	-			
2020-2	●	●	20	20	14	20.25	36.5	125	-			
2025-2	●	●	25	25	14	25.25	36.5	150	-			
1616-2.5	●	●	16	16	16	16.3	39	100	-	PGMN250-□-□		
2020-2.5	●	●	20	20	20	20.3	39	125	-			
1616-3	●	●	16	16	18	16.35	41.5	100	-	PGMN300-□-□ PRMN300-□		
2020-3-T10	●		20	20	10	20.35	41.5	125	-			
2020-3	●	●	20	20	18	20.35	41.5	125	-			
2525-3-T10	●	●	25	25	10	25.35	41.5	150	-			
2525-3	●	●	25	25	18	25.35	41.5	150	-			
3232-3-T10			32	32	10	32.35	41.5	170	-			
3232-3	●	●	32	32	18	32.35	41.5	170	-	PGMN400-□-□ PRMN400-□		
2020-4-T10	●		20	20	10	20.4	41.5	125	-			
2020-4	●	●	20	20	18	20.4	41.5	125	-			
2525-4-T10	●	●	25	25	10	25.4	41.5	150	-			
2525-4	●	●	25	25	18	25.4	41.5	150	-			
3232-4-T10			32	32	10	32.4	41.5	170	-			
3232-4	●	●	32	32	18	32.4	41.5	170	-	PGMN500-□-□ PRMN500-□	BHA0616	HW50L
2020-5-T15			20	20	15	20.5	46.5	150	-			
2020-5	●	●	20	20	23	20.5	46.5	150	-			
3232-5-T15			32	32	15	32.5	46.5	170	-			
3232-5	●	●	32	32	23	32.5	46.5	170	-			
2020-6-T15			20	20	15	20.55	46.5	125	-			
2020-6	●	●	20	20	23	20.55	46.5	125	-			
2525-6-T15			25	25	15	25.55	46.5	150	-			
2525-6	●	●	25	25	23	25.55	46.5	150	-			
3232-6-T15			32	32	15	32.55	46.5	170	-			
3232-6	●	●	32	32	23	32.55	46.5	170	-	PGMN800-□-□ PRMN800-□		
2525-8-T15	●		25	25	15	26.1	51.5	150	-			
2525-8	●	●	25	25	28	26.1	51.5	150	-			
3232-8-T15			32	32	15	33.1	51.5	170	-			
3232-8	●	●	32	32	28	33.1	51.5	170	-			

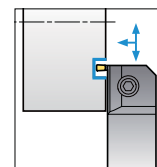
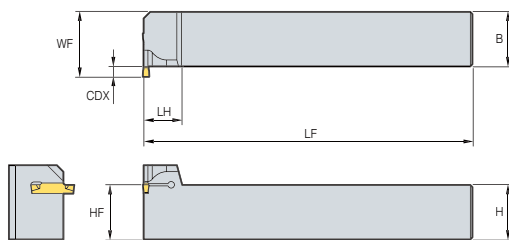
● : Stock item

MGEVR/L




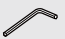
PGMN PRMN

External _ Grooving, Turning, Copying



· R type holder

(mm)

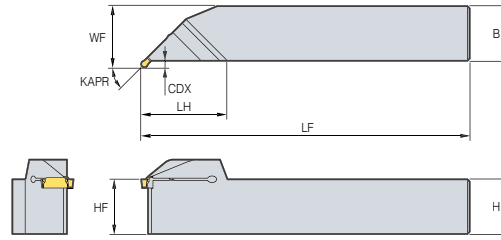
Designation	Stock		H=HF	B	CDX	WF	LH	LF	Applicable insert	Screw 	Wrench 
	R	L									
MGEVR/L 2020-1.5	●		20	20	3	23.5	28	125	PGMN150-□-□	LTX0514	TW20L
2525-1.5			25	25	3	28.5	28	150			
3232-1.5			32	32	3	35.5	28	170			
2020-2	●		20	20	3.5	23.5	28	125	PGMN200-□-□ PRMN200-□	BHA0616	HW50L
2525-2			25	25	3.5	28.5	28	150			
3232-2			32	32	3.5	35.5	28	170			
2020-2.5			20	20	4	24.8	28	125			
2525-2.5			25	25	4	29.8	28	150			
3232-2.5			32	32	4	36.8	28	170			
2020-3	●	●	20	20	5	25.5	28	125			
2525-3	●	●	25	25	5	30.5	28	150			
3232-3			32	32	5	37.5	28	170			
2020-4	●		20	20	5	25.5	28	125			
2525-4	●		25	25	5	30.5	28	150			
3232-4			32	32	5	37.5	28	170			
2020-5			20	20	7	27	30	125			
2525-5			25	25	7	32	30.5	150			
3232-5			32	32	7	39	30	170			
2020-6			20	20	7	30.5	30.5	125			
2525-6			25	25	7	32	30.5	150			
3232-6			32	32	7	39	30.5	170			
2525-8			25	25	9	34	31	150			
3232-8			32	32	9	41	31	170			

● : Stock item

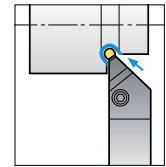
MGEUR/L



PRMN


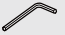


External_Copying, Relief



• R type holder

(mm)

Designation	Stock		H=HF	B	CDX	KAPR(°)	WF	LH	LF	Applicable insert	Screw 	Wrench 
	R	L										
MGEUR/L 2020-3	●		20	20	3	45	23	39.5	125	PRMN300-□	BHA0616	HW50L
2525-3	●		25	25	3	45	28	39.5	150			
3232-3			32	32	3	45	35	39.5	170			
2020-4			20	20	3	45	23	39.5	125	PRMN400-□		
2525-4	●		25	25	3	45	28	39.5	150			
3232-4			32	32	3	45	35	39.5	170			
2020-5			20	20	4	45	24	39.5	125	PRMN500-□		
2525-5	●	●	25	25	4	45	29	41	150			
3232-5			32	32	4	45	36	40	170			
2020-6			20	20	4	45	24	40	125	PRMN600-□		
2525-6	●		25	25	4	45	29	40	150			
3232-6	●	●	32	32	4	45	36	40	170			
2525-8			25	25	5	45	30	45	150	PRMN800-□		
3232-8			32	32	5	45	37	45	170			

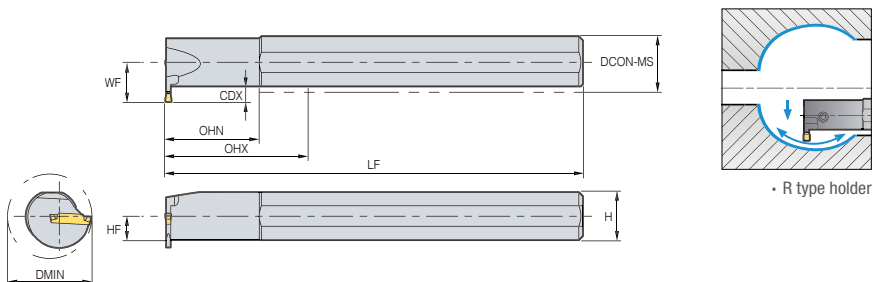
●: Stock item

MGIVR/L

Internal_Grooving, Turning, Copying



PGMN PRMN



(mm)

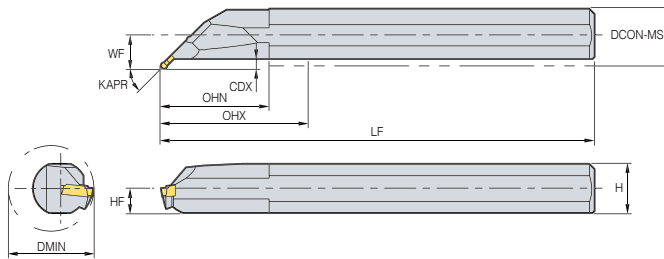
Designation	Stock		DMIN	DCON-MS	HF	H	CDX	WF	OHN	Lf	Applicable insert	Screw	Wrench
	R	L											
MGIVR/L 2016-1.5			20	16	7.5	15	3.5	11.3	35	125	PGMN150-□-□	MHB0310	HW25L
			25	20	9	18	3.5	13.1	45	150		MHA0512	HW40L
			29	25	11.5	23	3.5	16.2	45	200			
2016-2	●	●	20	16	7.5	15	4.9	11.95	35	125	PGMN200-□-□ PRMN200-□-□	MHB0310	HW25L
	●	●	25	20	9	18	5	14	45	150		MHA0512	HW40L
	●	●	29	25	11.5	23	4.5	16.5	45	200			
2016-2.5	●		20	16	7.5	15	4.5	12.5	35	125	PGMN250-□-□	MHB0310	HW25L
			25	20	9	18	5.5	15.1	45	150		MHA0512	HW40L
			29	25	11.5	23	5	17.25	45	200			
2520-3	●	●	25	20	9	18	5.3	15.6	45	150	PGMN300-□-□ PRMN300-□-□	MHA0512	HW40L
	●		25	20	9	18	7	16.5	45	150			
	●	●	31	25	11.5	23	6.5	18.9	45	200			
3125-3	●	●	31	25	11.5	23	10	18.9	45	200	PGMN300-□-□ PRMN300-□-□	MHA0512	HW40L
	●		31	25	11.5	23	10	18.9	45	200			
	●	●	37	32	15	30	6.5	21.5	65	250			
3732-3	●	●	37	32	15	30	12	21.5	65	250	PGMN400-□-□ PRMN400-□-□	MHA0512	HW40L
	●		37	32	15	30	12	21.5	65	250			
	●	●	25	20	9	18	6.17	15.6	45	150			
2520-4	●	●	25	20	9	18	7	15.6	45	150	PGMN400-□-□ PRMN400-□-□	MHA0512	HW40L
	●		25	20	9	18	7	15.6	45	150			
	●		31	25	11.5	23	6.5	18.9	45	200			
3125-4	●		31	25	11.5	23	10	19	45	200	PGMN400-□-□ PRMN400-□-□	BHA0620	HW50L
	●		31	25	11.5	23	10	19	45	200			
	●	●	37	32	15	30	6.5	21.5	65	250			
3732-4	●		37	32	15	30	12	21.5	65	250	PGMN500-□-□ PRMN500-□-□	MHA0512	HW40L
	●		37	32	15	30	12	21.5	65	250			
	●	●	25	20	9	18	7	15.6	45	150			
2520-4-T7	●		25	20	9	18	7	15.6	45	150	PGMN500-□-□ PRMN500-□-□	BHA0616	HW50L
	●		25	20	9	18	7	15.6	45	150			
	●		31	25	11.5	23	10	19	45	200			
3125-5	●		31	25	11.5	23	8	19.4	45	200	PGMN600-□-□ PRMN600-□-□	BHA0620	HW50L
	●		31	25	11.5	23	8	19.4	45	200			
	●	●	37	32	15	30	8	21.5	65	250			
3732-5	●		37	32	15	30	8	21.5	65	250	PGMN600-□-□ PRMN600-□-□	BHA0616	HW50L
	●		37	32	15	30	8	21.5	65	250			
	●	●	31	25	11.5	23	8	19.4	45	200			
3125-6	●	●	31	25	11.5	23	8	19.4	45	200	PGMN800-□-□ PRMN800-□-□	BHA0620	HW50L
	●		31	25	11.5	23	8	19.4	45	200			
	●	●	37	32	15	30	8	21.5	65	250			
3732-6	●		37	32	15	30	10	23.4	65	250	PGMN800-□-□ PRMN800-□-□	BHA0620	HW50L
	●		37	32	15	30	10	23.4	65	250			
	●	●	45	40	19	38	10	27.2	70	300			
3732-8	●		37	32	15	30	10	23.4	65	250	PGMN800-□-□ PRMN800-□-□	BHA0620	HW50L
	●		37	32	15	30	10	23.4	65	250			
4540-8	●		45	40	19	38	10	27.2	70	300	PGMN800-□-□ PRMN800-□-□	BHA0620	HW50L
	●		45	40	19	38	10	27.2	70	300			

●: Stock item

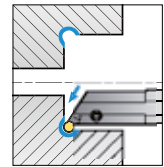
MGIUR/L



PRMN



Internal_Copying, Relief



• R type holder

(mm)

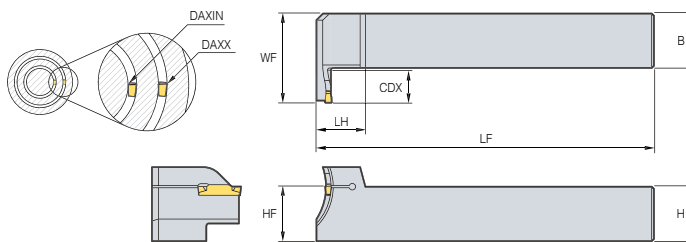
Designation	Stock		DMIN	DCON-MS	HF	H	KAPR(°)	CDX	WF	OHN	LF	Applicable insert	Screw	Wrench
	R	L												
MGIUR/L 3520-3			35	20	9	18	45	3.5	13	45	150	PRMN300-□	MHA0512	HW40L
4025-3	●		40	25	11.5	23	45	3.5	15.5	50	200			
5032-3			50	32	15	30	45	3.5	19	65	250			
3520-4			35	20	9	18	45	3.5	13	45	150	PRMN400-□	MHA0512	HW40L
4025-4	●		40	25	11.5	23	45	3.5	15.5	50	200			
5032-4	●		50	32	15	30	45	3.5	19	65	250			
4025-5			40	25	11.5	23	45	3.5	15.5	45	200	PRMN500-□	BHA0512	HW40L
5032-5	●		50	32	15	30	45	3.5	19	65	250		MHA0512	HW40L
4025-6			40	25	11.5	23	45	3.5	15.5	50	200	PRMN600-□	BHA0616	HW50L
5032-6	●		50	32	15	30	45	3.5	19	65	250		MHA0512	HW40L
4025-8			40	25	11.5	23	45	6.5	18.5	45	200	PRMN800-□	MHA0512	HW40L
5032-8	●		50	32	15	30	45	6.5	22	65	250		BHA0620	HW50L

●: Stock item

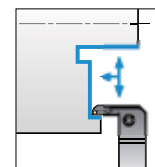
MGFVR/L



PGMN PRMN



Facing_ Grooving, Turning



• R type holder

(mm)

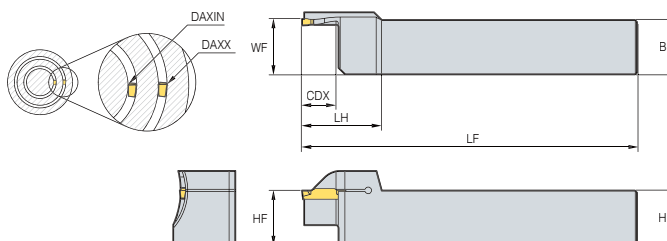
Designation	Stock		H=HF	B	CDX	WF	LH	LF	DAXIN	DAXX	Applicable insert	Screw	Wrench
	R	L											
MGFVR/L	325-24/35-T10		25	25	10	36	18	150	24	35	PGMN300-□-□ PRMN300-□	BHA0616	HW50L
	325-29/40-T10		25	25	10	36	18	150	29	40			
	325-34/50-T10		25	25	10	36	18	150	34	50			
	325-44/70-T10		25	25	10	36	18	150	44	70			
	325-64/99-T10		25	25	10	36	18	150	64	99			
	425-44/60-T15		25	25	15	41	25	150	44	60			
	425-60/120-T15		25	25	15	41	25	150	60	120			
	425-112/200-T15		25	25	15	41	25	150	112	200			

●: Stock item

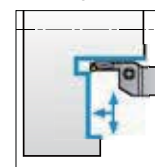
MGFHR/L



PGMN PRMN



Facing_ Grooving, Turning



• R type holder

(mm)

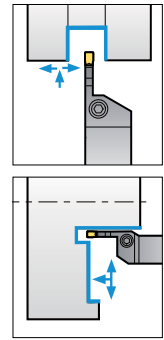
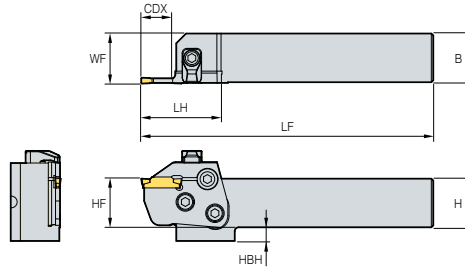
Designation	Stock		H=HF	B	CDX	WF	LH	LF	DAXIN	DAXX	Applicable insert	Screw	Wrench
	R	L											
MGFHR/L	325-24/35-T10	●	25	25	10	25.6	32	150	24	35	PGMN300-□-□ PRMN300-□	BHA0616	HW50L
	325-29/40-T10	●	25	25	10	25.6	32	150	29	40			
	325-34/50-T10	●	25	25	10	25.6	32	150	34	50			
	325-44/70-T10	●	25	25	10	25.6	32	150	44	70			
	325-64/99-T10	●	25	25	10	25.6	32	150	64	99			
	425-42/63-T15	●	25	25	15	25.6	46.5	150	42	63			
	425-62/120-T15	●	25	25	15	25.6	39	150	62	120			
	425-112/200-T15	●	25	25	15	25.6	39	150	112	200			

●: Stock item

MCHR/L



M CER/L M CFR/L



• R type holder

(mm)

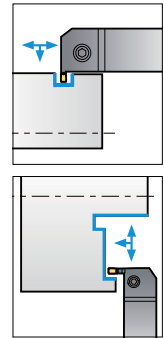
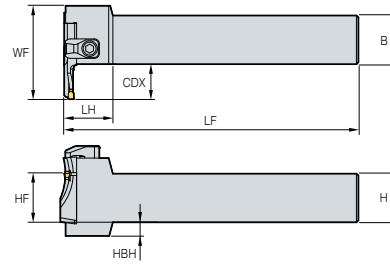
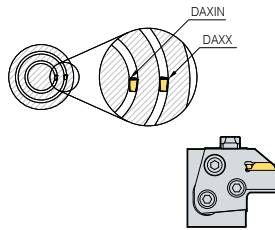
Designation	Stock		H = HF	B	WF	LH	LF	HBH	Applicable cartridge	Clamp	Clamp screw	Hinge screw	Clamping Screw	Wrench
	R	L												
MCHR/L	2020	● ●	20	20	20.7	30	133	12	M CER/L M CFR/L	CHX8N	DHA0818F	RHA0613	FHGA0618	HW40L
	2525	● ●	25	25	25.7	30	133	7						
	3232	● ●	32	32	32.7	-	153	-						

● : Stock item

MCVR/L



M CER/L M CFR/L



• R type holder

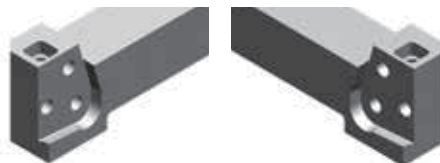
(mm)

Designation	Stock		H = HF	B	WF	LH	LF	HBH	Applicable cartridge	Clamp	Clamp screw	Hinge screw	Clamping Screw	Wrench
	R	L												
MCVR/L	2020	● ●	20	20	38	30	150	12	M CER/L M CFR/L	CXH8N	DHA0818F	RHA0613	FHGA0618	HW40L
	2525	● ●	25	25	43	30	150	7						
	3232	● ●	32	32	50	-	170	-						

● : Stock item

Cartridge selection guide

Horizontal type



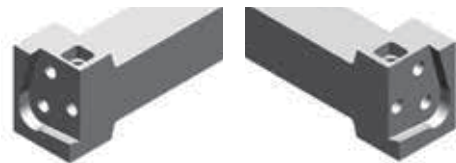
MCHR

- External: MCER
- Facing: MCFL

MCHL

- External: MCEL
- Facing: MCFR

Vertical type



MCVR

- External: MCEL
- Facing: MCFR

MCVL

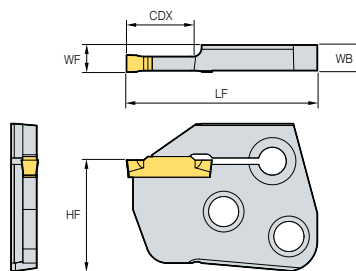
- External: MCER
- Facing: MCFL

Applicable cartridge

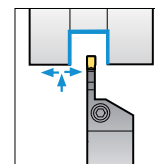
MCER/L



PGMN PRMN



External_Cartridge



• R type holder

(mm)

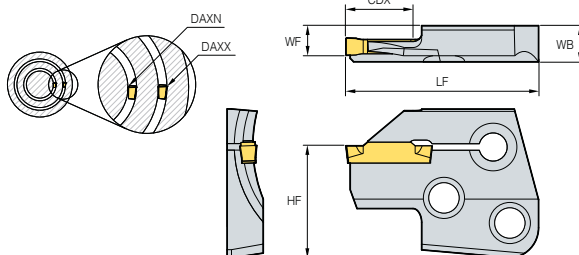
Designation	Stock		HF	CDX	WF	WB	LF	CW	Applicable insert	Applicable holder
	R	L								
MCER/L	●	●	25.83	16	6.35	6.00	44.5	3.00	PGMN300-□-□ PRMN300-□	MCHR/L MCVR/L
		●	25.83	16	6.35	5.97	44.5	4.00	PGMN400-□-□ PRMN400-□	
		●	25.83	20	6.35	5.87	48.5	5.00	PGMN500-□-□ PRMN500-□	
		●	25.83	20	6.35	5.82	48.5	6.00	PGMN600-□-□ PRMN600-□	

● : Stock item

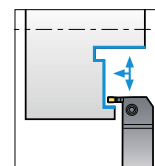
MCFR/L



PGMN PRMN



Facing_Cartridge



• R type holder

(mm)

Designation	Stock		HF	CDX	WF	WB	LF	DAXIN	DAXX	Applicable insert	Applicable holder
	R	L									
MCFR/L	●	●	25.83	16	6.35	8.35	44.5	44	60	PGMN400-□-□ PRMN400-□	MCHR/L MCVR/L
		●	25.83	16	6.35	8.35	44.5	60	120		
		●	25.83	16	6.35	8.35	44.5	112	200		

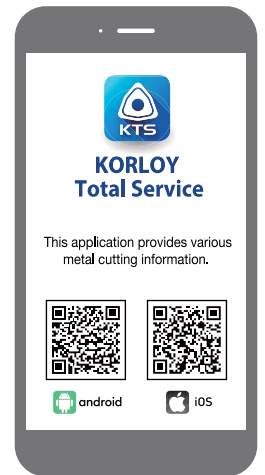
● : Stock item

⚠ For the safe metalcutting

- Use safety supplies such as protective gloves to prevent possible injury while touching the edge of tools.
- Use safety glasses or safety cover to hedge possible dangers. Inappropriate usage or excessive cutting condition may lead tool's breakage or even the fragment's scattering.
- Clamp the workpiece tightly enough to prevent its movement while its machining.
- Properly manage the tool change phase because the inordinately used tool can be easily broken under the excessive cutting load or severe wear, and it may threat the operator's safety.
- Use safety cover because chips evacuated during cutting are hot and sharp and may cause burns and cuts. To remove chips safely, stop machining, put on protective gloves, and use a hook or other tools.
- Prepare for fire prevention measures as the use of the non-water soluble cutting oil may cause fire.
- Use safety cover and other safety supplies because the spare parts or the inserts can be pulled out due to centrifugal force while high speed machining.



Head Office: Holystar B/D, 326, Seocho-daero, Seocho-gu, Seoul, 06633, Republic of Korea
Tel: +82-2-522-3181 Fax: +82-2-522-3184, +82-2-3474-4744 Web: www.korloy.com E-mail: sales.khq@korloy.com



KORLOY AMERICA

620 Maple Avenue, Torrance, CA 90503, USA
Tel: +1-310-782-3800 Toll Free: +1-888-711-0001 Fax: +1-310-782-3885
E-mail: sales.kai@korloy.com

KORLOY INDIA

Plot No. 415, Sector 8, IMT Manesar, Gurgaon 122051, Haryana, India
Tel: +91-124-439-1790 Fax: +91-124-405-0032
E-mail: sales.kip@korloy.com

KORLOY TURKIYE

Serifali Mahallesi, Burhan Sokak NO: 34
Dudullu OSB/Umraniye/Istanbul, 34775, Turkiye
Tel: +90-216-415-8874 E-mail: sales.ktl@korloy.com

KORLOY RUSSIA

Premises 1/3, building 3, house 3, per Kapranova, vn.ter.g. municipal district Presnensky, 123242, Moscow, Russia
Tel: +7-495-280-1458 Fax: +7-495-280-1459 E-mail: sales.krc@korloy.com

KORLOY FACTORY INDIA

Plot No. 415, Sector 8, IMT Manesar, Gurgaon 122051, Haryana, India
Tel: +91-124-439-1818 Fax: +91-124-405-0032
E-mail: pro.kim@korloy.com

KORLOY EUROPE

Gablonzer Str. 25-27, 61440 Oberursel, Germany
Tel: +49-6171-27783-0 Fax: +49-6171-27783-59
E-mail: sales.keg@korloy.com

KORLOY BRASIL

Av. Aruana 280, conj.12, WLC, Alphaville, Barueri, CEP06460-010, SP, Brasil
Tel: +55-114-193-3810 Fax: +55-114-193-5837
E-mail: sales.kbl@korloy.com

KORLOY CHILE

Av. Providencia 1650, Office 910, 7500027
Providencia-Santiago, Chile
Tel: +56-229-295-490 E-mail: sales.kcs@korloy.com

KORLOY MEXICO

Avenida de las Ciencias, No. 3015, Interior 507, Juriquilla Santa Fe, C.P. 76230 Querétaro, Querétaro, Mexico
Tel: +52-442-193-3600 E-mail: sales.kml@korloy.com

