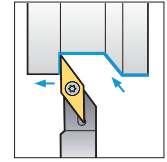
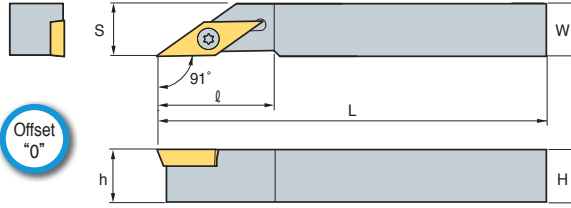


# SVAPR/L



VP□T



91°

• R type insert

(mm)

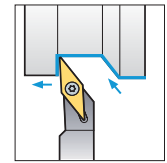
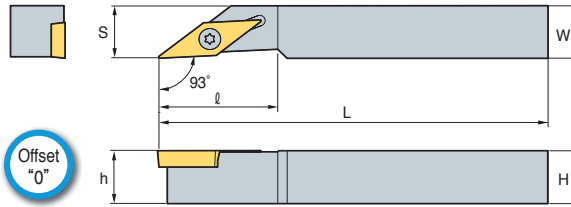
Designation	H	W	L	S	h	ℓ	Insert	Screw	Wrench
SVAPR/L 0808-X11A	8	8	120	8	8	22	VP□T1103□□	FTKA 02565	TW 07P
1010-X11A	10	10	120	10	10	22			
1212-X11A	12	12	120	12	12	22			
1616-X11A	16	16	120	16	16	24			

➔ Applicable inserts B88

# SVJBR/L



VB□T



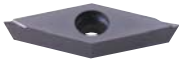
93°

• R type insert  
(mm)

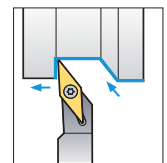
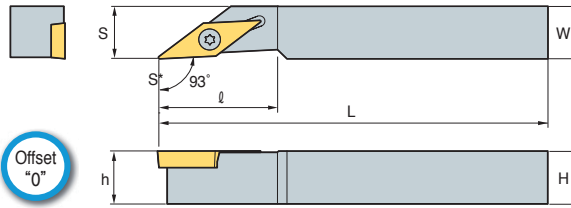
Designation	H	W	L	S	h	ℓ	Insert	Screw	Wrench
SVJBR/L 1010-X11A	10	10	120	10	10	22	VB□T1103□□	FTKA 02565	TW 07P
1212-X11A	12	12	120	12	12	22			
1616-X11A	16	16	120	16	16	24			

➔ Applicable inserts B84~B85, B96

# SVJCR/L



VC□T



93°

• R type insert  
(mm)

Designation	H	W	L	S	h	ℓ	Insert	Screw	Wrench
SVJCR/L 1010-X11A	10	10	120	10	10	22	VC□T1103□□	FTKA 02565	TW 07P
1212-X11A	12	12	120	12	12	22			
1616-X11A	16	16	120	16	16	24			
0810-X12A	8	10	120	10	8	26	VP□T1203□□	FTKA 02565	TW 07P
1010-X12A	10	10	120	10	10	26			
1212-X12A	12	12	120	12	12	26			
1616-X12A	16	16	120	16	16	26			
SVJCR/L 0810-X12C	8	10	120	10	8	26	VC□X1203□□R/L	FTKA 02565	TW 07P
1010-X12C	10	10	120	10	10	26			
1212-X12C	12	12	120	12	12	26			
1616-X12C	16	16	120	16	16	26			

➔ Applicable inserts B86~B87, B97

