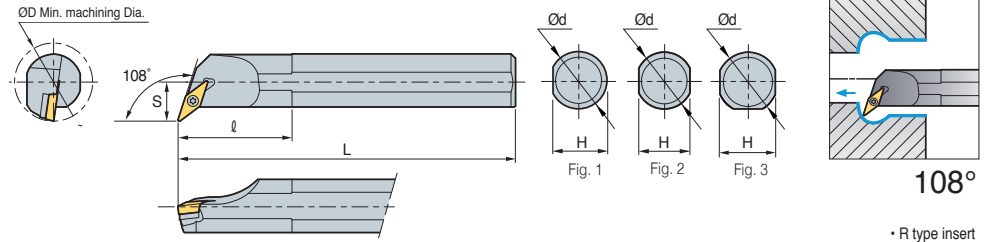


B Screw on System

SVQCR/L



VC□□

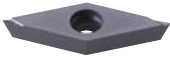


• R type insert (mm)

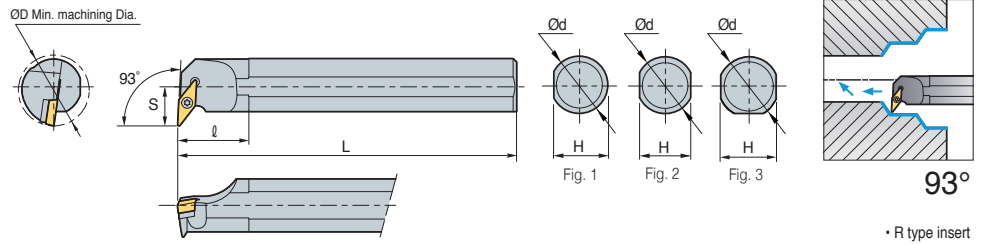
Designation	ØD	Ød	H	L	S	ℓ	Insert	Screw	Shim	Shim Screw	Wrench	Fig.
S16R-SVQCR/L-11	20	16	14	200	11	25	VC□□1103□□	FTKA02565	-	-	TW07P	2
S20S-SVQCR/L-11	25	20	18	250	13	32						3
S25R-SVQCR/L-11	32	25	23	200	17	40						3
S20S-SVQCR/L-13	25	20	18	250	13	32	VC□□1303□□	FTKA0307	-	-	TW07P	2
S25R-SVQCR/L-13	32	25	23	200	17	40						3
S25R-SVQCR/L-16	32	25	23	200	17	40	VC□□1604□□	FTGA03510	-	-	TW15P	3
S32S-SVQCR/L-16	40	32	30	250	22	50		FTGA03512	SV32S	SHXN0509F	TW15P HW35L	
S40T-SVQCR/L-16	50	40	38	300	27	60						

➔ Applicable inserts B86~B87, B97

SVUBR/L



VB□□



• R type insert (mm)

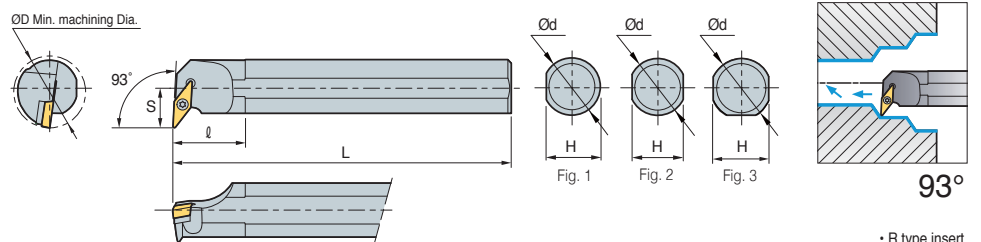
Designation	ØD	Ød	H	L	S	ℓ	Insert	Screw	Shim	Shim Screw	Wrench	Fig.
S32S-SVUBR/L-16	40	32	30	250	22	50	VB□□1604□□	FTGA03512	SV32S	SHXN0509F	TW15P HW35L	3
S40T-SVUBR/L-16	50	40	38	300	27	60						
A32S-SVUBR/L-16	40	32	30	250	22	50						

➔ Applicable inserts B84~B85, B96

SVUCR/L



VC□□



• R type insert (mm)

Designation	ØD	Ød	H	L	S	ℓ	Insert	Screw	Shim	Shim Screw	Wrench	Fig.
S16R-SVUCR/L-11	20	16	14	200	11	25	VC□□1103□□	FTKA02565	-	-	TW07P	2
S20S-SVUCR/L-11	25	20	18	250	13	32						3
S25T-SVUCR/L-11	32	25	23	300	17	40						3
S20S-SVUCR/L-13	25	20	18	250	13	32	VC□□1303□□	FTKA0307	-	-	TW09P	2
S25R-SVUCR/L-13	32	25	23	200	17	40						3
S25R-SVUCR/L-16	32	25	23	200	17	40	VC□□1604□□	FTGA03510	-	-	TW15P	3
S32S-SVUCR/L-16	40	32	30	250	22	50		FTGA03512	SV32S	SHXN0509F	TW15P HW35L	
S40T-SVUCR/L-16	50	40	38	300	27	60						

➔ Applicable inserts B86~B87, B97

