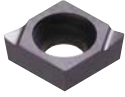
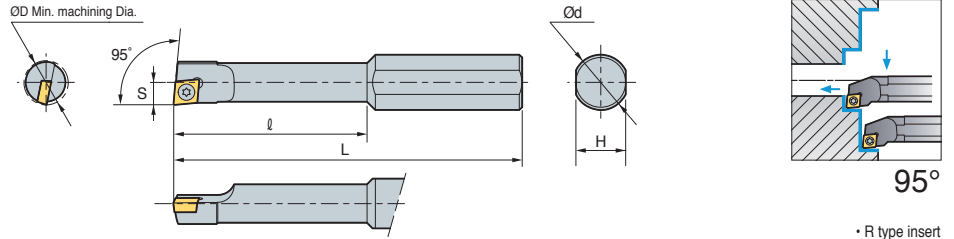


SCLCR/L



CCET



Designation	ØD	Ød	H	L	S	ℓ	Insert	Screw	Wrench
S10H-SCLCR/L-0305	5	10	9	100	2.5	25	CCET 0301□□	FTNA01633	TW06P
S10H-SCLCR/L-0306	6	10	9	100	3.0	25			
S10J-SCLCR/L-0407	7	10	9	110	3.5	30	CCET 0401□□	FTNA0238	TW06P
S10J-SCLCR/L-0408	8	10	9	110	4.0	30			

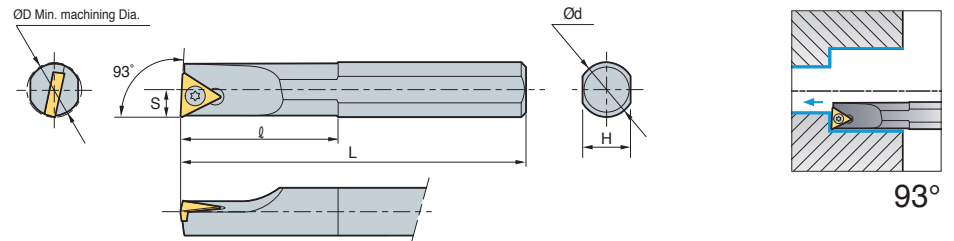
↻ Applicable inserts B66

• Use left handed insert for right handed holder

STUBR/L



TB□□



↻ Steel shank type

Designation	ØD	Ød	H	L	S	ℓ	Insert	Screw	Wrench
S08K-STUBR/L-06	8	8	7	125	4	30	TB□□0601□□R/L	FTNA0204	TW06P
A08F-STUBR/L-06	8	8	7.5	80	4	30			

↻ Carbide shank type

Designation	ØD	Ød	H	L	S	ℓ	Insert	Screw	Wrench
C08K-STUBR/L-06	10	8	7	125	5	TB□T0601□□	FTNA0204	TW06P	
C10K-STUBR/L-06	12	10	9	125	6				
E08K-STUBR/L-06	10	8	7	125	5	TB□T0601□□	FTNA0204	TW06P	
E10K-STUBR/L-06	12	10	9	125	6				

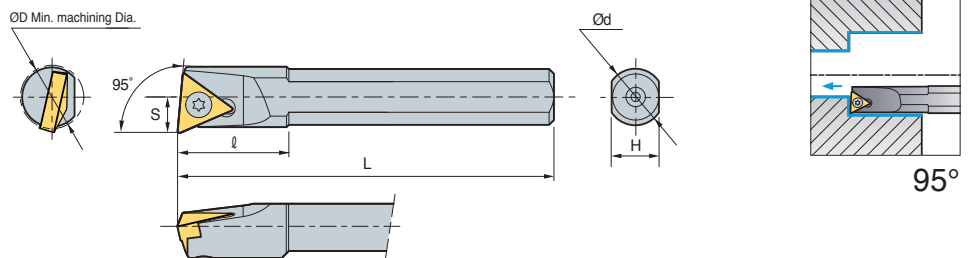
↻ Applicable inserts B78

• Use left handed insert for right handed holder

STLBR/L



TB□□



↻ Steel shank type

Designation	ØD	Ød	H	L	S	ℓ	Insert	Screw	Wrench
S06H-STLBR/L-06-SP	8	6	5	100	3.8	12	TB□□0601□□R/L	FTNA0204	TW06P

↻ Applicable inserts B78

• Use left handed insert for right handed holder

