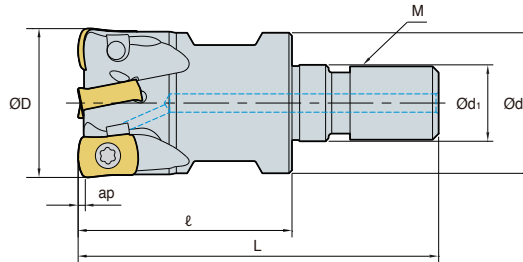
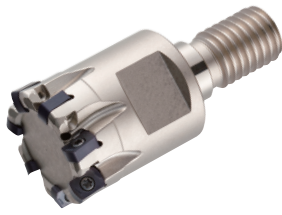


HFMDM-LN04 new



• AR: -8°
• RR: -16°~-10°

(mm)

Designation		ØD	Ød	Ød1	ℓ	L	M	ap	
HFMDM 010R-2-M06-LN04	2	10	9.5	6.5	22	37	M6	0.4	0.01
011R-2-M06-LN04	2	11	11	6.5	22	37	M6	0.5	0.01
012R-3-M06-LN04	3	12	11	6.5	22	37	M6	0.5	0.01
013R-3-M06-LN04	3	13	11	6.5	22	37	M6	0.5	0.02
016R-4-M08-LN04	4	16	14.5	8.5	22	39	M8	0.5	0.03
017R-4-M08-LN04	4	17	14.5	8.5	22	39	M8	0.5	0.03
020R-5-M10-LN04	5	20	18	10.5	30	51	M10	0.5	0.06
025R-7-M12-LN04	7	25	23	12.5	30	54	M12	0.5	0.1
032R-8-M16-LN04	8	32	29	17	35	62	M16	0.5	0.2
033R-8-M16-LN04	8	33	29	17	35	62	M16	0.5	0.2
035R-9-M16-LN04	9	35	29	17	35	62	M16	0.5	0.21

Available inserts

LNX-ML LNX-MM



Designation	Cermet		Coated										Uncoated		page			
	CN2500	CN30	NC5330	NCM325	NCM335	NCM535	NCM545	PC2505	PC2510	PC3700	PC6510	PC9530	PC9540	PC5300		PC5400	ST30A	H01
LNX 040205R-ML														●	●			E12
040205R-MM								●	●					●	●			

Available adaptor

Designation	Available adaptor
HFMDM 010R-2-M06-LN04	MAT-M06
011R-2-M06-LN04	
012R-3-M06-LN04	
013R-3-M06-LN04	
016R-4-M08-LN04	MAT-M08
017R-4-M08-LN04	

Designation	Available adaptor
HFMDM 020R-5-M10-LN04	MAT-M10
025R-7-M12-LN04	MAT-M12
032R-8-M16-LN04	MAT-M16
033R-8-M16-LN04	
035R-8-M16-LN04	

Designation : HFMDM016R-4-M08-LN04
Modular head threading measure size (M08)

||

Adaptor spec.: MAT-M08-040-S16T
Adaptor threading measure (M08)

Parts

Specification		
Ø10~Ø35	FTKA01844-A	TW06S-A

Available inserts E12 Available adaptor E401-E402

